



## Rising Together: Sarasota

### Results of Climate Resilience Outreach Survey



**Unitarian Universalist  
Church of Sarasota**

A Welcoming Congregation

3975 Fruitville Road  
Sarasota, FL 34232  
941-371-4974

In  
Partnership  
with

**Community Bible Church**  
1959 Dr. Martin Luther King Way  
Sarasota, FL 34234



7 June, 2017

Project Director and Primary Author	Janice T. Booher, MS
Climate Leader, UU Church of Sarasota	Diane Cirksena
Pastor, Community Bible Church	Pastor Jo Thomas

- This is a project of Unitarian Universalist Justice Florida, led in Sarasota by the UU Church of Sarasota in partnership with Community Bible Church in Newtown.
- This project was funded in part by the Unitarian Universalist Fund for Social Responsibility.
- This project was funded in part by the UUFBR Endowment Fund.
- Development of the ReACT Tool Kit and the Pilot Project was funded by EPA Environmental Justice Grant #EQ-00D35415-0 awarded to the Green Sanctuary Committee of the UU Fellowship of Boca Raton.

## Table of Contents

<b>Content</b>	<b>Page</b>
Findings	3
Executive Summary	4
Sarasota Survey Results	
Resident engagement and Languages Spoken in Surveyed Households	6
Respondents' Self-Reported Familiarity with Sea Level Rise	7
How Many Feet do you Estimate Your Home to be Above Mean Sea Level?	8
Do you think that Sea Level Rise is Occurring in Sarasota County Today?	9
What is Your Overall Level of Concern with the Future Impacts of Sea Level Rise for Sarasota County?	10
What is Your Overall Level of Concern with Extreme Weather for Sarasota County?	11
Where you live, how many feet deep into the ground do you think that you would have to dig before you got to water (either freshwater or saltwater)?	12
Residents' Strongest Concern for Sarasota County	13
Comments Explaining Residents' Primary Concerns	14
Water Quality Comments	14
Extreme Weather Comments	15
Property Value Comments	16
Insurance Comments	16
Erosion Comments	16
Residents' Comments Regarding Flooding	17
Map of Respondents, with experience of flooding indicated	20
Incidence of Mold, Asthma and Water Contamination	22
Contributors to project success	23
Appendix A: Health and Climate Outreach Sheet (English)	24
Appendix B: Sea Level Rise Risk Perception Survey (English)	27

-This is a project of Unitarian Universalist Justice Florida, led in Sarasota by the UU Church of Sarasota in partnership with the Community Bible Church in Newtown.

-This project was funded in part by the Unitarian Universalist Fund for Social Responsibility.

-This project was funded in part by the UUFBR Endowment Fund.

-Development of the ReACT Tool Kit and the Pilot Project was funded by EPA Environmental Justice Grant #EQ-00D35415-0 awarded to the Green Sanctuary Committee of the UU Fellowship of Boca Raton.

## Findings

1. **Residents' Strongest Concerns:** Water quality (32%) and extreme weather (31%) were the future impacts of sea level rise of greatest concern to residents surveyed. Property value was the strongest concern identified by 16% of residents. Most respondents surveyed had either Very High (31%) or High (33%) level of concern with future impacts of sea level rise. Level of concern with extreme weather was high or very high for more than half (56%) of respondents.
2. **Health:** The prevalence of asthma among residents responding to the survey (18%) was slightly more than three times the 2013 Sarasota County adult asthma prevalence (5.3%). Mold is an asthma trigger, and 34% of households reported experiencing mold. 13% of households reported experience with water contamination.
3. **Water and Flooding:** Experience with flooding was reported by 46% of survey respondents. Comments on experience with flooding ranged from ponds overflowing to house flooding (see pp.18-20). Three households reported problems with blocked storm drains.
4. **Code Red Registration:** Outreach team members were trained to assist residents to complete registration with the Code Red Emergency Notification System on using smart phones. 41 residents were registered with Code Red.
5. **Perception of Sea Level Rise:** There is a need for further outreach and education on sea level rise in this community, together with basic information about the topography. Although 75% of residents believe that sea level rise is happening in Sarasota County, 30% of residents reported that they were not at all familiar with it. Most residents had either a high level of concern about sea level rise (33%) or a very high level of concern (31%).
6. **Risk Perception:** Most respondents widely underestimated (51%) their elevation or underestimated it (30%). In addition, most resident also widely underestimated (56%) or underestimated (30%) the depth to the water table at their residence. This overestimation of risk from sea level rise and water table elevation might cause homeowners to undervalue their property as developers seek higher ground.
7. **Extreme Weather:** Respondents were concerned about extreme weather. Fully 80% of residents had a medium level of concern or higher, with 28% of households reporting a very high level of concern and 28% reporting a high level of concern.

-This is a project of Unitarian Universalist Justice Florida, led in Sarasota by the UU Church of Sarasota in partnership with the Community Bible Church in Newtown.

-This project was funded in part by the Unitarian Universalist Fund for Social Responsibility.

-This project was funded in part by the UUFBR Endowment Fund.

-Development of the ReACT Tool Kit and the Pilot Project was funded by EPA Environmental Justice Grant #EQ-00D35415-0 awarded to the Green Sanctuary Committee of the UU Fellowship of Boca Raton.

## Executive Summary

*Rising Together: Sarasota* is part of a broader environmental justice initiative led by Unitarian Universalist Justice Florida in vulnerable communities of coastal Florida.

*Rising Together* partners Unitarian Universalist congregations with existing leadership in vulnerable coastal communities to train residents to survey and educate their neighbors about preparation for and response to the health effects of extreme weather and climate hazards.

**Funding:** The pilot project, on which these efforts are based, was undertaken in Boca Raton and Delray Beach, Florida. The pilot project was funded with an EPA Environmental Justice Small Project Grant, and was used to create the training and outreach materials and methods being used in this project, which are available on this website [www.ReACTToolKit.net](http://www.ReACTToolKit.net). The current replication phase of *Rising Together* has 2 additional communities on Florida's east coast and 4 on Florida's west coast engaged in building coastal resilience in vulnerable communities, and in determining how the materials and methods used in the communities can be improved.

**Study Area:** Outreach from Community Bible Church in Newtown reached households in 14 zip codes in Manatee and Sarasota Counties. Of the 96 households responding to the survey, 89 were in Sarasota County, and 7 were in Manatee County. The 2010 Census Data on the relevant zip codes is below.

**Table 1.** 2010 Census data is reported by zip code of respondent's residences below.<sup>1</sup>

Zip code-COUNTY	Number of Respondents in the Zip Code	Avg. Household Income	% Black Population	% Hispanic Population	Avg. House Value In 2010
34234-SAR	53	\$31,605	40.3%	12.7%	\$94,800
34236-SAR	7	\$51,028	6.7%	11.6%	\$580,700
34232-SAR	7	\$52,737	3.1%	11.3%	\$158,000
34237-SAR	7	\$41,305	9.5%	29.2%	\$102,500
34272-SAR	7	Data Not Available	Data Not Available	Data Not Available	Data Not Available
34231-SAR	2	\$47,127	2.1%	7.5%	\$162,500
34230-SAR	1	Data Not Available	Data Not Available	Data Not Available	Data Not Available
34235-SAR	2	\$51,776	5.9%	13.7%	\$173,700
34239-SAR	1	\$49,199	2.7%	10.7%	\$201,200
34243-1MAN/2SAR	3	\$61,885	5.9%	8.9%	\$213,700
34228-MAN	1	\$89,087	0.3%	1.1%	\$631,400
34203-MAN	3	\$47,917	10.5%	21.8%	\$158,400
34208-MAN	1	\$39,723	25.4%	27.1%	\$133,200
34209-MAN	1	\$53,852	3.0%	5.1%	\$172,000

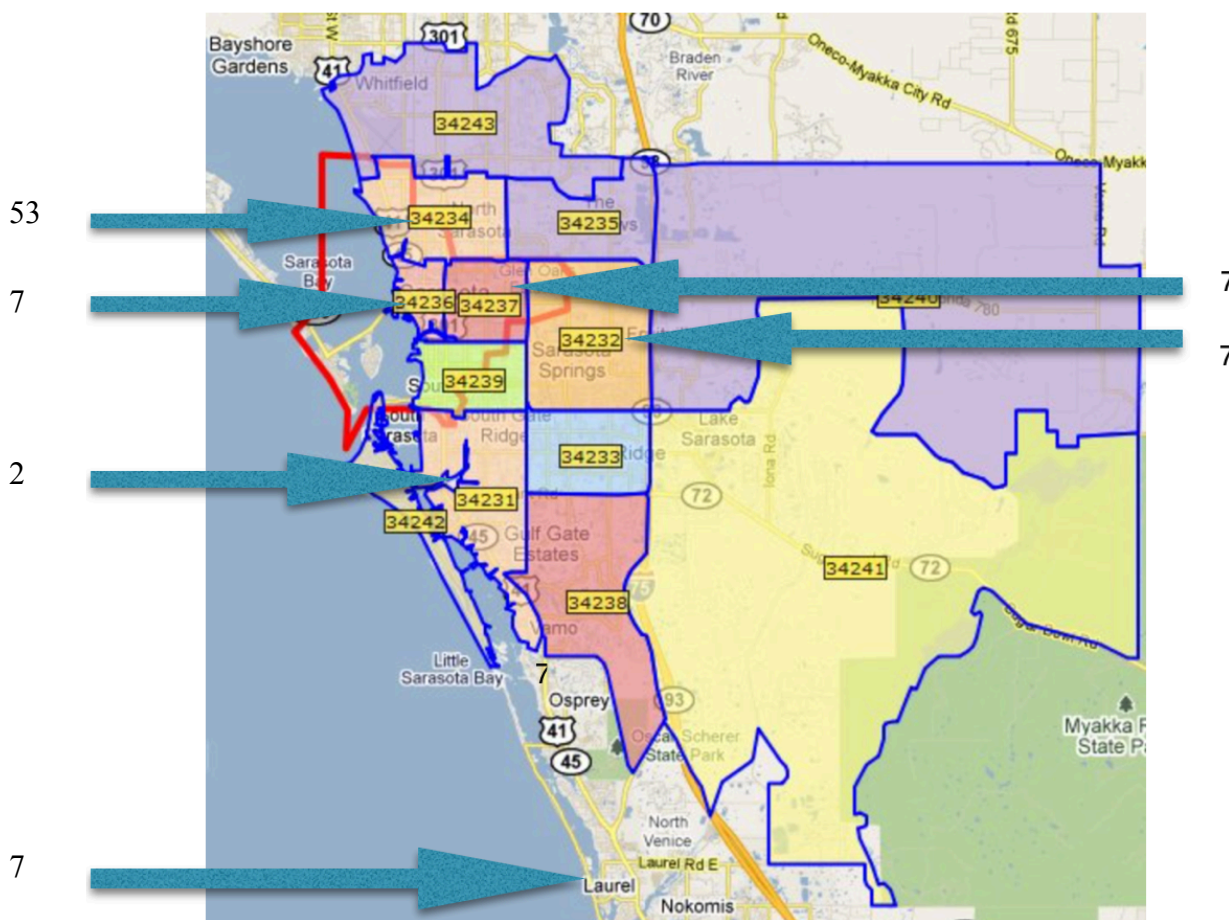
<sup>1</sup> < <https://www.zip-codes.com/zip-code/33435/zip-code-33435.asp> >

-This is a project of Unitarian Universalist Justice Florida, led in Sarasota by the UU Church of Sarasota in partnership with the Community Bible Church in Newtown.

-This project was funded in part by the Unitarian Universalist Fund for Social Responsibility.

-This project was funded in part by the UUFBR Endowment Fund.

-Development of the ReACT Tool Kit and the Pilot Project was funded by EPA Environmental Justice Grant #EQ-00D35415-0 awarded to the Green Sanctuary Committee of the UU Fellowship of Boca Raton.



**Figure 1.** The zip codes of most households are indicated in the map of the Sarasota Bay area above. Fifty-three respondents resided in 34234. Seven respondents resided in each of the zip codes: 34236, 34232, 34237, and 34272 respectively. Two respondents resided in 34231. The remainder of the residents resided in other the zip codes detailed in Table 1 above.

- This is a project of Unitarian Universalist Justice Florida, led in Sarasota by the UU Church of Sarasota in partnership with the Community Bible Church in Newtown.
- This project was funded in part by the Unitarian Universalist Fund for Social Responsibility.
- This project was funded in part by the UUFBR Endowment Fund.
- Development of the ReACT Tool Kit and the Pilot Project was funded by EPA Environmental Justice Grant #EQ-00D35415-0 awarded to the Green Sanctuary Committee of the UU Fellowship of Boca Raton.

## **Resident Engagement**

Unitarian Universalist Church of Sarasota partnered with the Community Bible Church to survey and educate 96 households about protecting their safety and health related to priority Florida Climate Hazards identified by the Florida Health Building Resilience Against Climate Effects (BRACE) initiative: Tropical Storms and Hurricanes, and extremes of precipitation.<sup>2</sup> Thirteen members of the Community Bible Church were trained to survey and educate their neighbors about the health effects of climate change, five of whom served as the Outreach Team.

The Community Bible Church is a non-denominational community of faith in the center of Sarasota's Newtown area. Founded 25 years ago by Wade and Jo Thomas, it is dedicated to bringing the light of salvation through Jesus Christ to its members and to anyone in need. "We believe Bible teaching and study is at the heart of our church," says Pastor Jo Thomas. "With the Bible at the center of our lives, we are then equipped to reach out to impact Newtown and beyond."

Multiple outreach ministries of the Community Bible Church include:

- \* Saturday breakfast delivered to the elderly and those unable to provide for themselves.
- \* A children's ministry on Saturdays and Sundays, which includes breakfast and a wide range of activities to keep young spirits engaged.
- \* A clothes closet, which on a monthly-basis brings together donors and those in need of clothing.

Most outreach was achieved through personal networking through the church and its activities. Additional surveying was done at community events. Thirteen members of Community Bible Church were trained on how to prepare for and respond to the health effects of climate change, and 5 of those trained became the Outreach Team.

## **Languages Spoken in Surveyed Households**

English was the primary language in all surveyed households. All surveys were conducted in English.

---

<sup>2</sup> "Climate and Health" *Building Resilience Against Climate Effects (BRACE)* Florida Department of Health. N.p., n.d. Web. 10 Mar 2017. <<http://www.floridahealth.gov/environmental-health/climate-and-health/brace/index.html>>

-This is a project of Unitarian Universalist Justice Florida, led in Sarasota by the UU Church of Sarasota in partnership with the Community Bible Church in Newtown.

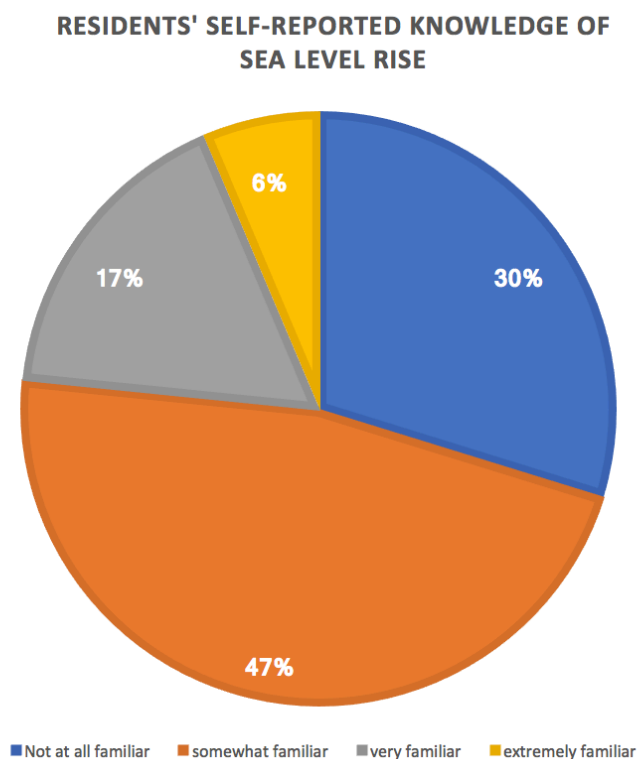
-This project was funded in part by the Unitarian Universalist Fund for Social Responsibility.

-This project was funded in part by the UUFBR Endowment Fund.

-Development of the ReACT Tool Kit and the Pilot Project was funded by EPA Environmental Justice Grant #EQ-00D35415-0 awarded to the Green Sanctuary Committee of the UU Fellowship of Boca Raton.

## Respondents' Self-Reported Familiarity with Sea Level Rise

Residents completed the survey prior to hearing information about the public health effects of climate change. The first survey question was, "How would you rate your existing knowledge about sea level rise?"



**Figure 2.** Almost half of the respondents (47%) reported that they were somewhat familiar with sea level rise, and an additional 6% reported that they were extremely familiar with sea level rise. 17% reported that they were very familiar with sea level rise. However, 30% of residents reported that they were not at all familiar with sea level rise, indicating a need for further outreach and education.

-This is a project of Unitarian Universalist Justice Florida, led in Sarasota by the UU Church of Sarasota in partnership with the Community Bible Church in Newtown.

-This project was funded in part by the Unitarian Universalist Fund for Social Responsibility.

-This project was funded in part by the UUFBR Endowment Fund.

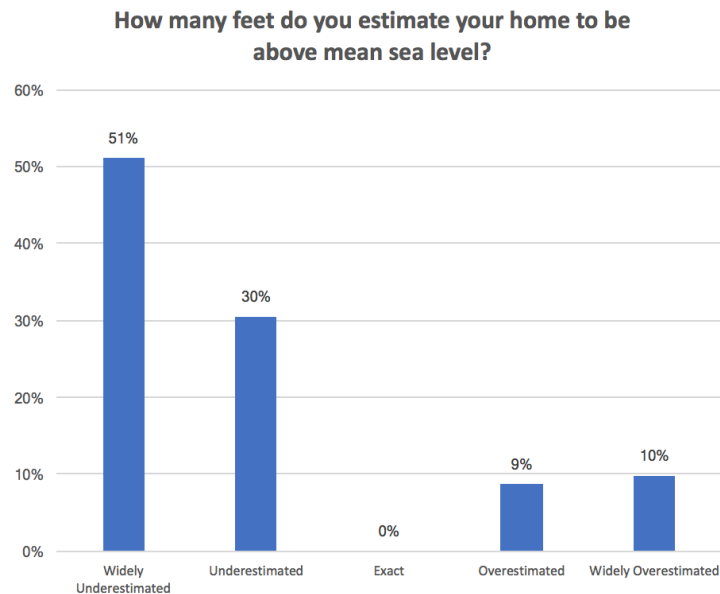
-Development of the ReACT Tool Kit and the Pilot Project was funded by EPA Environmental Justice Grant #EQ-00D35415-0 awarded to the Green Sanctuary Committee of the UU Fellowship of Boca Raton.

## How Many Feet do you Estimate Your Home to be Above Mean Sea Level?

Residents' responses to the question, "How many feet do you estimate your home to be above mean sea level?" were compared against the actual elevations of their homes. Actual elevations were obtained by entering the address into Eyes on the Rise.<sup>3</sup> The percentage difference between the actual elevation and the respondent's estimate was calculated. The responses were characterized as indicated in the table below.

**Table 2.** Characterization of responses

Widely underestimated	50% or more less than their actual elevation
Underestimated	Between 0 and 50% less than their actual elevation
Exact	Actual Elevation from Eyes On The Rise
Overestimated	Between 0 and 50% more than their actual elevation
Widely Overestimated	50% or more over their actual elevation



**Figure 3.** Most residents widely underestimated their elevation (51%), and another 30% underestimated it. 9% of respondents overestimated their elevation, and 10% widely overestimated it. The range of reported estimates of elevation was from 10 ft below sea level to 1,000 ft above sea level, therefore education about sea level rise should include basic information about local topography.

<sup>3</sup> McGillicuddy, Dan. "Eyes on the Rise." *Citizen Eyes*. FIU GIS Center, n.d. Web. 02 Apr. 2017. <<http://citizeneyes.org/app/>>.

-This is a project of Unitarian Universalist Justice Florida, led in Sarasota by the UU Church of Sarasota in partnership with the Community Bible Church in Newtown.

-This project was funded in part by the Unitarian Universalist Fund for Social Responsibility.

-This project was funded in part by the UUFBR Endowment Fund.

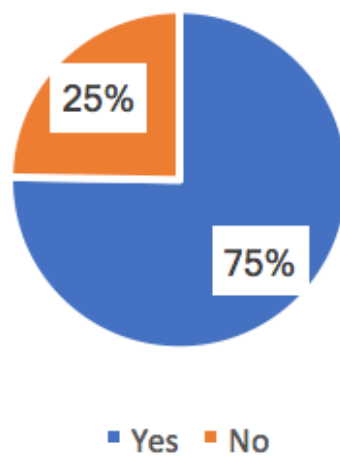
-Development of the ReACT Tool Kit and the Pilot Project was funded by EPA Environmental Justice Grant #EQ-00D35415-0 awarded to the Green Sanctuary Committee of the UU Fellowship of Boca Raton.



### Do you think that Sea Level Rise is Occurring in Sarasota County Today?

Canvassers were instructed to give the survey to residents prior to educating them about the health effects of sea level rise. Therefore, this result documents residents' perceptions prior to outreach education.

### Do you think that sea level rise is occurring in Sarasota County today?

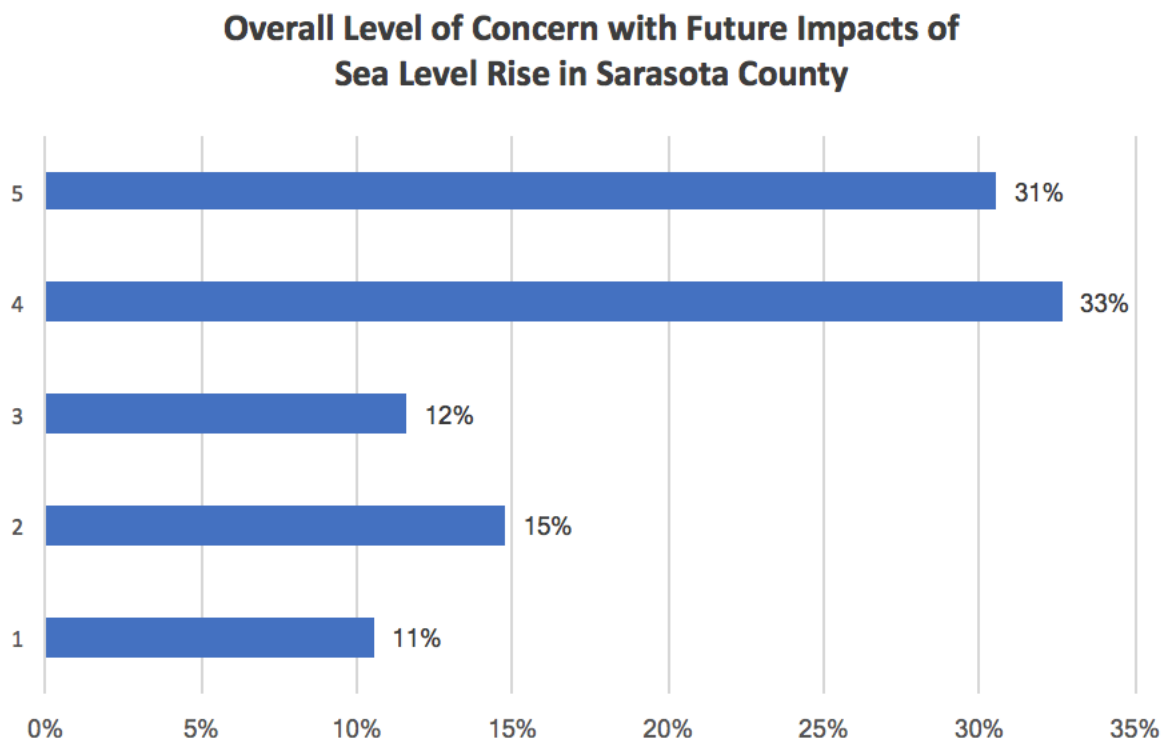


**Figure 4.** Slightly more than three quarters of residents (75%) surveyed stated they believed that sea level rise is occurring in Sarasota County, with 25% stating that they did not.

-This is a project of Unitarian Universalist Justice Florida, led in Sarasota by the UU Church of Sarasota in partnership with the Community Bible Church in Newtown.  
-This project was funded in part by the Unitarian Universalist Fund for Social Responsibility.  
-This project was funded in part by the UUFBR Endowment Fund.  
-Development of the ReACT Tool Kit and the Pilot Project was funded by EPA Environmental Justice Grant #EQ-00D35415-0 awarded to the Green Sanctuary Committee of the UU Fellowship of Boca Raton.

## What is Your Overall Level of Concern with the Future Impacts of Sea Level Rise for Sarasota County?

Respondents were asked to rate their overall level of concern with the future impacts of sea level rise in Sarasota County. They chose from the following responses: 1-None, 2-Low, 3-Medium, 4-High and 5-Very High.



**Figure 5.** Most residents surveyed had either a Very High (31%) or High (33%) level of concern with future impacts of sea level rise. On the low end of concern, 11% of residents had no concern with future impacts of sea level rise in Sarasota County, 15% reported a low level of concern, and 12% reported a medium level of concern.

-This is a project of Unitarian Universalist Justice Florida, led in Sarasota by the UU Church of Sarasota in partnership with the Community Bible Church in Newtown.

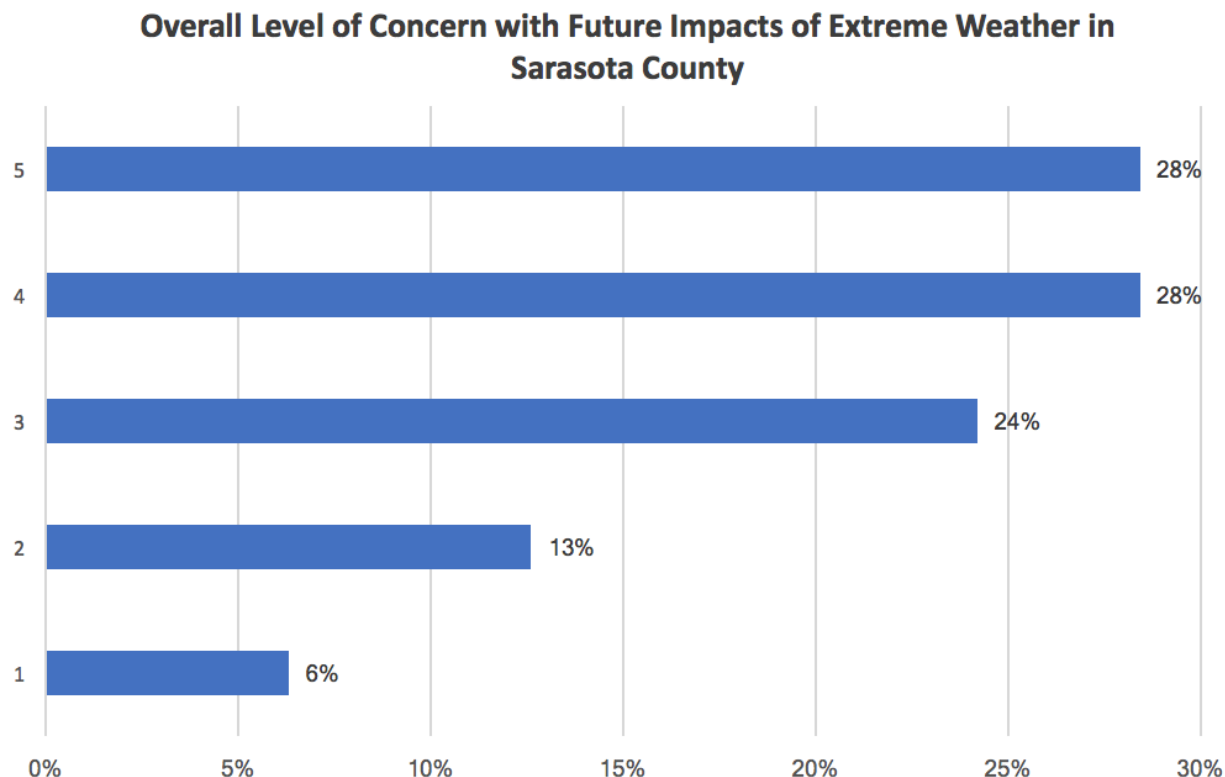
-This project was funded in part by the Unitarian Universalist Fund for Social Responsibility.

-This project was funded in part by the UUFBR Endowment Fund.

-Development of the ReACT Tool Kit and the Pilot Project was funded by EPA Environmental Justice Grant #EQ-00D35415-0 awarded to the Green Sanctuary Committee of the UU Fellowship of Boca Raton.

## What is Your Overall Level of Concern with Extreme Weather for Sarasota County?

Respondents were asked to rate their overall level of concern with extreme weather for Sarasota County. They chose from the following responses: 1-None, 2-Low, 3-Medium, 4-High and 5-Very High.



**Figure 6.** More than half of respondents reported either a high level of concern (28%) or very high level of concern (28%). Medium concern was expressed by 24% of residents. Extreme weather was of no concern to only 6% of the residents, and of low concern to 13% of residents.

-This is a project of Unitarian Universalist Justice Florida, led in Sarasota by the UU Church of Sarasota in partnership with the Community Bible Church in Newtown.

-This project was funded in part by the Unitarian Universalist Fund for Social Responsibility.

-This project was funded in part by the UUFBR Endowment Fund.

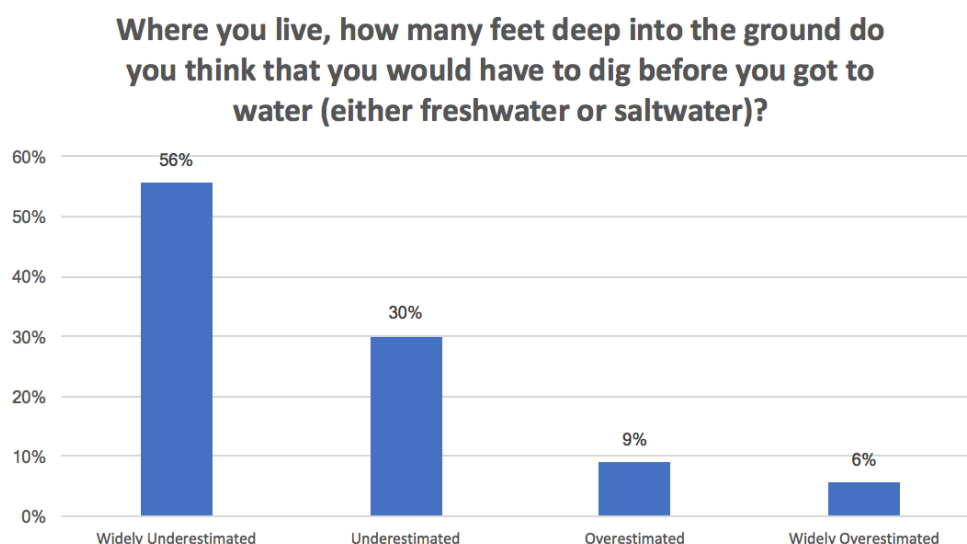
-Development of the ReACT Tool Kit and the Pilot Project was funded by EPA Environmental Justice Grant #EQ-00D35415-0 awarded to the Green Sanctuary Committee of the UU Fellowship of Boca Raton.

**Where you live, how many feet deep into the ground do you think that you would have to dig before you got to water (either freshwater or saltwater)?**

The difference between the actual depth to groundwater and the depth to groundwater entered by the respondent was calculated. Criteria for characterizing respondents' estimates follows in Table 3.

**Table 3.** Criteria for characterizing residents' estimates:

Widely underestimated	50% or more shallower than the actual depth to groundwater
Underestimated	Between 0% and 50% shallower than the actual depth to groundwater
Exact	17.07 ft the well at 23rd and Coconut W in Sarasota <sup>4</sup>
Overestimated	Between 0 and 50% deeper than the actual depth to groundwater
Widely Overestimated	50% or more deeper than the actual depth to groundwater



**Figure 7.** The depth that a resident would have to dig to reach water was widely underestimated by 56% of respondents and underestimated by another 30%. Of the respondents who overestimated their depth to the water table, 6% widely overestimated the depth and 9% overestimated their risk.

<sup>4</sup> [https://nwis.waterdata.usgs.gov/nwis/inventory/?site\\_no=272127082323801&agency\\_cd=USGS](https://nwis.waterdata.usgs.gov/nwis/inventory/?site_no=272127082323801&agency_cd=USGS)

-This is a project of Unitarian Universalist Justice Florida, led in Sarasota by the UU Church of Sarasota in partnership with the Community Bible Church in Newtown.

-This project was funded in part by the Unitarian Universalist Fund for Social Responsibility.

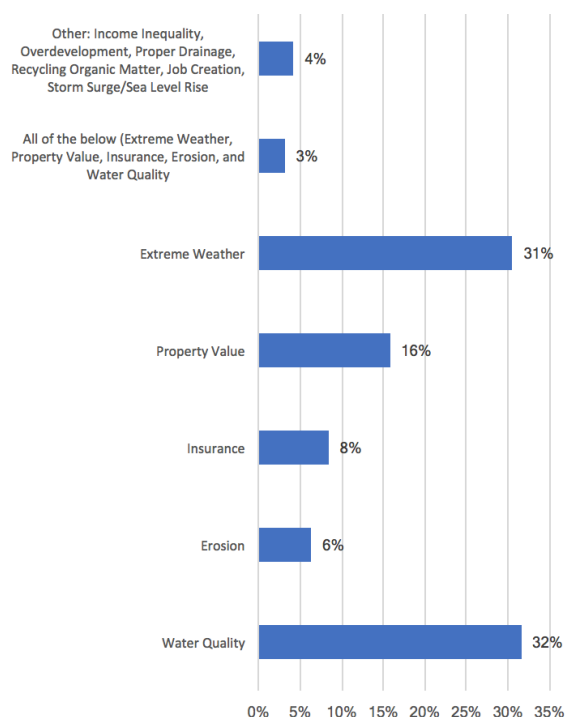
-This project was funded in part by the UUFBR Endowment Fund.

-Development of the ReACT Tool Kit and the Pilot Project was funded by EPA Environmental Justice Grant #EQ-00D35415-0 awarded to the Green Sanctuary Committee of the UU Fellowship of Boca Raton.

## Residents' Strongest Concern for Sarasota County

The Sea Level Rise Risk Perception Survey asked respondents to choose their strongest concern for Sarasota County from six multiple choice options: Water Quality, Insurance, Erosion, Property Value, Extreme Weather and Other, with a blank to record Other concerns. Some residents indicated more than one strong concern. Because there is no way to determine which of the multiple concerns was the strongest on any given survey, the percentages below reflect all selections of each concern as a percentage of the 123 responses from 99 residents.

### Strongest Concern for Sarasota County



**Figure 8.** Three percent of residents surveyed stated that extreme weather, property value, insurance, erosion and water quality were all of concern. Residents' individually identified strongest concerns were water quality (32%) and extreme weather (31%), followed by property value (16%), insurance (8%) and erosion (6%). A variety of concerns were entered in the "other" category by 4% of respondents, as indicated in the figure above.

-This is a project of Unitarian Universalist Justice Florida, led in Sarasota by the UU Church of Sarasota in partnership with the Community Bible Church in Newtown.

-This project was funded in part by the Unitarian Universalist Fund for Social Responsibility.

-This project was funded in part by the UUFBR Endowment Fund.

-Development of the ReACT Tool Kit and the Pilot Project was funded by EPA Environmental Justice Grant #EQ-00D35415-0 awarded to the Green Sanctuary Committee of the UU Fellowship of Boca Raton.

## Comments Explaining Residents' Strongest Concerns

**Table 4. Water Quality Comments**

<b>Cocoanut Ave.</b>	As long as we have a tourism driven economy, we must make sure to keep our bay and gulf alive, and we all need good drinking water and good sources of water to grow food.
<b>Dodge Ave.</b>	Herbicides run off and contaminate our drainage ditches.
<b>Gardens Dr.</b>	Water is the #1 human need for survival
<b>Gillespie Ave.</b>	Street flood
<b>Kumquat Ct.</b>	What do we do if the water doesn't come out of the tap clean?
<b>Leeta Ln.</b>	Moving here to be near family -- but I have huge concerns about water quality....
<b>Leon Ave.</b>	Water could prove a very big problem for our family.
<b>Leon Ave.</b>	Water pollution is already bad in the neighborhood. Rain makes it worse.
<b>Live Oak Dr.</b>	As a future homeowner, I want to select the right area to build or buy.
<b>Mango Ave.</b>	Our water supplies sometimes force us to buy water.
<b>Osprey Ave.</b>	Mold
<b>Pelican Dr.</b>	Storms -- hurricanes and flooding.
<b>Pershing</b>	Jesus is the only way forward through this. He will save us.
<b>N. Tamiami Trail</b>	The water quality I am thinking of is the Gulf. Last summer there was a "bacteria" closure at Lido because of that heavy rain -- I forgot what month. Tampa/St. Petersburg had a similar incident during a storm last summer.
<b>Willow Links</b>	South Florida will be under water., i.e., water quality in Sarasota will deteriorate.
<b>17<sup>th</sup> St.</b>	I don't drive. How will I get water?
<b>18<sup>th</sup> St.</b>	Can't imagine having to haul water.....
<b>20<sup>th</sup> St.</b>	In flood situation, the people in my neighborhood have water impacts. They all just drink out of the tap.
<b>29<sup>th</sup> St.</b>	I know some areas with well water, and people can't drink it.
<b>39<sup>th</sup> Ct. E</b>	Saltwater intrusion and pollution of water - Without clean water we can't live here.
<b>39<sup>th</sup> Ct. E</b>	I worry most about the impact of development, mining, population growth... all of that on water quality and availability over the long term.

-This is a project of Unitarian Universalist Justice Florida, led in Sarasota by the UU Church of Sarasota in partnership with the Community Bible Church in Newtown.

-This project was funded in part by the Unitarian Universalist Fund for Social Responsibility.

-This project was funded in part by the UUFBR Endowment Fund.

-Development of the ReACT Tool Kit and the Pilot Project was funded by EPA Environmental Justice Grant #EQ-00D35415-0 awarded to the Green Sanctuary Committee of the UU Fellowship of Boca Raton.

**Table 5. Extreme Weather Comments**

<b>Bay Pt.</b>	Concern subsidence, water rising through storm drains.
<b>Braden Ave.</b>	Because extreme weather impacts all the others on that list.
<b>Euclid</b>	I have no plan for evacuation. I would be unable to respond during a crisis.
<b>Four Seasons Cir.</b>	Hate the heat.
<b>Four Seasons Cir.</b>	How do I get evacuated in a storm?
<b>Gardens Dr.</b>	Extreme weather impacts everything else...property insurance, property value, water quality, etc.
<b>Glen Oaks Manor Dr.</b>	Water quality, erosion, insurance, property value are all closely related to weather (extreme).
<b>Glen Oaks Manor Dr.</b>	I'm concerned about the combined effect of storm surge and flooding, which are made worse by sea level rise causing more property damage and risk to health and life.
<b>Goodrich Ave.</b>	How do we evacuate? Get water?
<b>Hidden Lake Blvd.</b>	Intense heavy rainstorms.
<b>Highland St.</b>	I own my own home, but property value and insurance are not as critical as the other items.
<b>Old Bradenton Rd.</b>	Extreme weather causes havoc to public health, sanitation, utilities, housing, particularly in poorer communities.
<b>Palmadelia Ave.</b>	My concern is that when it rains a lot, our street floods out.
<b>Rita St.</b>	I don't believe we're ready for extreme events.
<b>N. Tuttle Ave.</b>	It is very important to me, and I worry about extreme weather events.
<b>N. Tuttle Ave.</b>	As sea level change and red tide the effect of water level and cause for asthma, bronchitis and pneumonia that will be triggered
<b>N. Tuttle Ave</b>	Where we go from here
<b>Washington</b>	Mold in our house.
<b>Webber St.</b>	We are long overdue for a tropical storm/hurricane!
<b>9<sup>th</sup> St.</b>	Too many people moving here, too few routes to evacuate.
<b>10<sup>th</sup> St.</b>	I hate the heat.
<b>10<sup>th</sup> St.</b>	flooding a hurricane
<b>24<sup>th</sup> St.</b>	The heat kills me. I am on heart medications, and have already experienced increasing incidents with our poor air conditioning.
<b>28<sup>th</sup> St. E</b>	Flooding after big rain storms.
<b>29<sup>th</sup> St.</b>	What happens when we have a hurricane, and we have no electricity and tons of rain?
<b>30<sup>th</sup> St.</b>	Because of the change in weather patterns nationwide I am concerned of what might hit our area.

-This is a project of Unitarian Universalist Justice Florida, led in Sarasota by the UU Church of Sarasota in partnership with the Community Bible Church in Newtown.

-This project was funded in part by the Unitarian Universalist Fund for Social Responsibility.

-This project was funded in part by the UUFBR Endowment Fund.

-Development of the ReACT Tool Kit and the Pilot Project was funded by EPA Environmental Justice Grant #EQ-00D35415-0 awarded to the Green Sanctuary Committee of the UU Fellowship of Boca Raton.

**Table 6. Property Value Comments**

<b>Bowers St.</b>	My property values will deteriorate when our community is impacted.
<b>Grantham Dr.</b>	Extreme weather could ruin me.
<b>Margaret St.</b>	Want to sell my house.
<b>Murdock Ave.</b>	The neighborhood is suffering from the crazy amount of development going on -- Bee Ridge is a mess.
<b>Poinsettia Ave.</b>	Values will erode with storms.
<b>Washington</b>	These are all related. Everything needs to be looked at.
<b>22<sup>nd</sup> St.</b>	My house is my only asset.
<b>30<sup>th</sup> St.</b>	What will happen if the coast disappears?
<b>66<sup>th</sup> St. W</b>	I'm a foreclosure defense attorney so I have clients dealing with the aggressive fall of property values.

**Table 7. Insurance Comments**

<b>Dr. Martin Luther King Way</b>	Rates continue to rise because of multiple and varied reasons
<b>Pershing</b>	Rental rates are already rising. Possible flooding. Hurricane would be destructive.
<b>22<sup>nd</sup> St.</b>	My house is my only asset.
<b>30<sup>th</sup> St.</b>	What will happen if the coast disappears?

**Table 8. Erosion Comments**

<b>N. Osprey</b>	I feel that the community should be made more aware of the problems with water, extreme weather.
<b>16<sup>th</sup> St.</b>	I am concerned about overall climate change and impact on sea levels.

**Table 9. Other**

<b>Bonita Ln.</b>	Income inequality! Flooding disproportionately impacts those with fewer resources.
<b>Glen Oaks Manor Dr.</b>	Storm surge/sea level rise: I'm concerned about the combined effect of storm surge and flooding, which are made worse by sea level rise causing more property damage and risk to health and life.
<b>Seward Dr.</b>	Job creation
<b>Silver Maple St.</b>	Too much building. Traffic, street congestion.
<b>Twin Dr.</b>	Plastic bags in any store should be discontinued.
<b>West Pl.</b>	Proper Drainage. Property value.

-This is a project of Unitarian Universalist Justice Florida, led in Sarasota by the UU Church of Sarasota in partnership with the Community Bible Church in Newtown.

-This project was funded in part by the Unitarian Universalist Fund for Social Responsibility.

-This project was funded in part by the UUFBR Endowment Fund.

-Development of the ReACT Tool Kit and the Pilot Project was funded by EPA Environmental Justice Grant #EQ-00D35415-0 awarded to the Green Sanctuary Committee of the UU Fellowship of Boca Raton.



## What flood related impacts have you experienced in your neighborhood?

**Table 10. Residents' Comments Regarding Flooding**

<b>Aspinwall St.</b>	Rising water in surrounding streets during rain events.
<b>Bay Pt.</b>	High tide flooding, flooding with rain.
<b>Boulevard of the Arts</b>	None. I live in a facility with an emergency plan. I am disabled, in need of transport help.
<b>Boulevard of the Arts</b>	Tamiami Trail/Ringling Causeway intersection flood with having several + a year.
<b>Bowers St.:</b>	Flooding with rain storms (minimal) We have to monitor our well water.
<b>Braden Ave.</b>	Here (300 feet from Sarasota Bay) we have experienced continued run-off from lawn fertilizers during rainstorms. It rushes right down our street into the bay. There is very little enforcement of the "no fertilizer" ban. Our water supply comes from Manatee County, which is badly impacted from time to time with contaminants. I have a place near Myakka River where there have been 3 "100 year floods" in the last 20 years.
<b>Bunche St.</b>	Flooding during big rainstorms.
<b>Church St.</b>	Rain/flooding
<b>Cocoanut Ave.</b>	None personally, but I am watching Whitaker Bayou deteriorate daily.
<b>Collins Rd.</b>	None really - maybe minor flooding
<b>Collins Rd.</b>	street flooding
<b>Collins Rd.</b>	street flooding
<b>Dodge Ave.</b>	The drainage ditches are often clogged, and we must call the City of Sarasota repeatedly to get any help with that.
<b>Dr. Martin Luther King Way</b>	Flooding with rain
<b>Euclid</b>	Both mold and asthma in our household.
<b>Four Seasons Circle</b>	High tide flooding 1961
<b>Gardens Dr.</b>	Limited Street flooding with rain
<b>Gillespie Ave.</b>	Flooding with rain.
<b>Gillespie Ave.</b>	Streets flooding out -- city was called on various occasions with drains not cleared out. Mold outside our house.
<b>Gillespie Ave.</b>	When we have heavy rain, almost always we have flooded streets and yards.
<b>Gillespie Ave.</b>	Our streets flood very easily.
<b>Gillespie Ave.</b>	Flooding with rain

-This is a project of Unitarian Universalist Justice Florida, led in Sarasota by the UU Church of Sarasota in partnership with the Community Bible Church in Newtown.

-This project was funded in part by the Unitarian Universalist Fund for Social Responsibility.

-This project was funded in part by the UUFBR Endowment Fund.

-Development of the ReACT Tool Kit and the Pilot Project was funded by EPA Environmental Justice Grant #EQ-00D35415-0 awarded to the Green Sanctuary Committee of the UU Fellowship of Boca Raton.

<b>Glen Oaks Manor Dr.</b>	low-lying roads are under water for days after heavy rain
<b>Glen Oaks Manor Dr.</b>	None
<b>Glen Oaks Manor Dr.</b>	None
<b>Glen Oaks Manor Dr.</b>	None yet.
<b>Grantham Dr.</b>	None
<b>Hidden Lake Blvd.</b>	Flooding after a big rain.
<b>Highland St.</b>	None
<b>Leeta Ln.</b>	None yet
<b>Leon</b>	Water is important for everyone.
<b>Leon Ave.</b>	None so far
<b>Live Oak Dr.</b>	ponds overflowing
<b>Lockwood</b>	Little or no flooding or anything else...
<b>Murdock Ave.</b>	Back up of the lift station.
<b>Osprey</b>	None
<b>P.O. Box, Laurel 34272</b>	Ditches of standing water
<b>Palmadelia</b>	Water in the street.
<b>Pelican Dr.</b>	I'm at Ringling and Shade. Water build up is there because of sewers. They have been working to fix this for the last 2 years, but it's still a problem.
<b>Pershing</b>	Yes. Everyone in my household has asthma, we have mold, and our water has experienced periods of time when we cannot use it.
<b>Pershing</b>	Hurricane, flooding with Matthew.
<b>Pershing Ave.</b>	None
<b>Poinsettia</b>	Storm water surges.
<b>Rita St.</b>	None
<b>Silver Maple St.</b>	Water in streets during big rain storms.
<b>N. Tamiami Trail</b>	No "impacts" as of yet
<b>N. Tuttle Ave.</b>	lot of water in retention ponds
<b>N. Tuttle Ave.</b>	Retention ponds
<b>N. Tuttle Ave.</b>	None
<b>N. Tuttle Ave.</b>	Little so far. We have some mold.
<b>Twin Dr.</b>	None
<b>Washington</b>	We just had a big water main break on MLK Blvd.... and this is the dry season still!! Are these things related?
<b>Watts Way</b>	None
<b>Webber St.</b>	Roads flooded, water coming up to our house, ditches, ponds, lakes overflowing.
<b>West Place</b>	Escape Routes

-This is a project of Unitarian Universalist Justice Florida, led in Sarasota by the UU Church of Sarasota in partnership with the Community Bible Church in Newtown.

-This project was funded in part by the Unitarian Universalist Fund for Social Responsibility.

-This project was funded in part by the UUFBR Endowment Fund.

-Development of the ReACT Tool Kit and the Pilot Project was funded by EPA Environmental Justice Grant #EQ-00D35415-0 awarded to the Green Sanctuary Committee of the UU Fellowship of Boca Raton.

<b>Willow Links</b>	Street flooding, high winds, rise in retention ponds.
<b>8<sup>th</sup> Ave E.</b>	Flooding. Not too far from Manatee River.
<b>9<sup>th</sup> St.</b>	Traffic, flooding during heavy rains.
<b>10<sup>th</sup> St.</b>	None
<b>10<sup>th</sup> St.</b>	Flooding (street) after heavy rain.
<b>10<sup>th</sup> St.</b>	high water on the streets
<b>16<sup>th</sup> St.</b>	Whitaker Bayou has gone downhill.
<b>17<sup>th</sup> St.</b>	None
<b>18<sup>th</sup> St.</b>	None yet
<b>20<sup>th</sup> St.</b>	In flood situation, the people in my neighborhood have water impacts. They all just drink out of the tap. Lots of asthma.
<b>21<sup>st</sup> St.</b>	The ditch next to the property I just bought has been clogged with litter. We have needed to call the city to get this addressed. Trash can stop up the drain easily.
<b>24<sup>th</sup> St.:</b>	Personally I have mold in the house, and suffer from asthma.
<b>28<sup>th</sup> St. E.</b>	Standing Water
<b>29<sup>th</sup> St.</b>	We need to call the City when our street drains are clogged. Hard rain comes right through our street to the drains and sometimes this is a problem.
<b>29<sup>th</sup> St.</b>	Streets flood very bad, sidewalks too.....
<b>30<sup>th</sup> St.</b>	have not experienced
<b>30<sup>th</sup> St.</b>	None
<b>30<sup>th</sup> St.</b>	No-name storm flooding in area of MLK and US 301.
<b>30<sup>th</sup> St.</b>	Hurricane Donna (60"s) ... I worked for the city and saw lots of flooding in Sarasota, even in Newtown on 29th Street (Orange Avenue).
<b>31<sup>st</sup> St.</b>	None yet
<b>32<sup>nd</sup> St.</b>	Flooded house 1992 and 2013
<b>39<sup>th</sup> Ct. E.</b>	No flooding yet. High lakes but drains are functioning.
<b>39<sup>th</sup> Ct. E</b>	Flooding streets and slow draining ditches.
<b>45<sup>th</sup> St.</b>	Flooding from rain/drainage
<b>66<sup>th</sup> St. W</b>	Flood insurance

-This is a project of Unitarian Universalist Justice Florida, led in Sarasota by the UU Church of Sarasota in partnership with the Community Bible Church in Newtown.

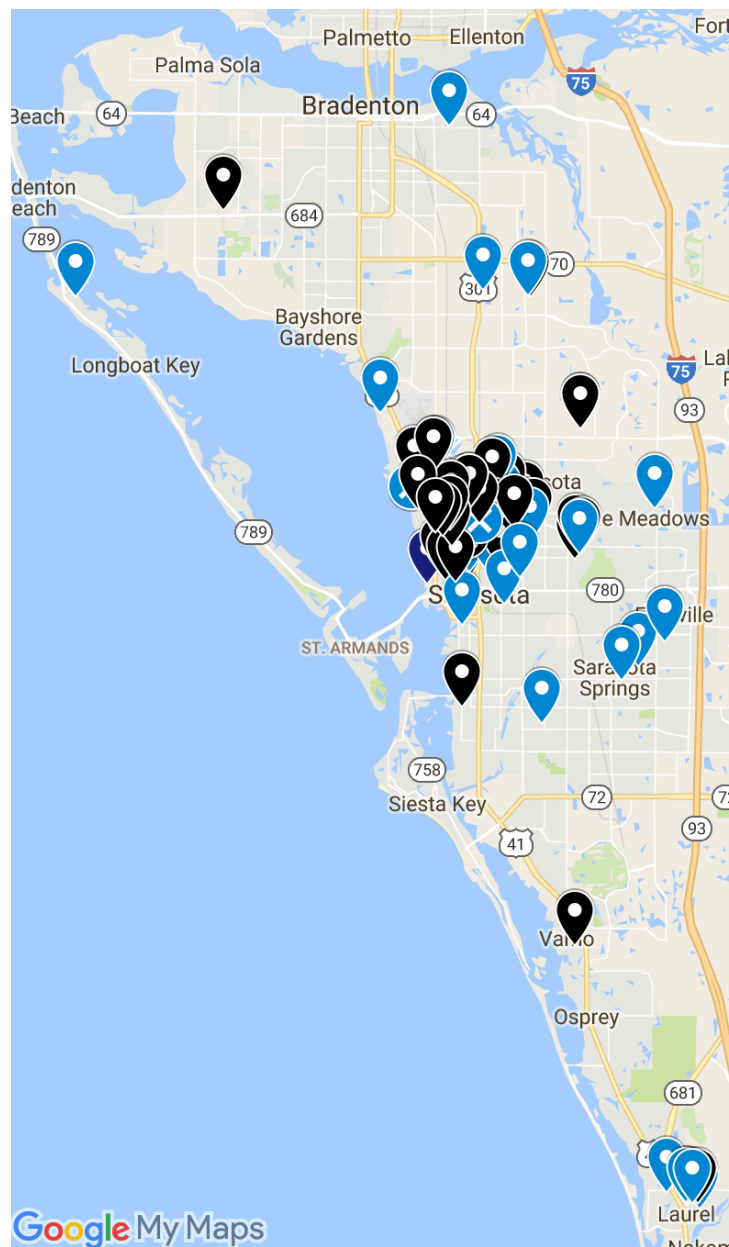
-This project was funded in part by the Unitarian Universalist Fund for Social Responsibility.

-This project was funded in part by the UUFBR Endowment Fund.

-Development of the ReACT Tool Kit and the Pilot Project was funded by EPA Environmental Justice Grant #EQ-00D35415-0 awarded to the Green Sanctuary Committee of the UU Fellowship of Boca Raton.

## Maps of Respondent Households with Reports of Flooding Indicated

All households surveyed were mapped. In response to the question, “What flood related impacts have you experienced in your neighborhood?” 46% of respondents indicated that they had experience with flooding. All households surveyed are mapped below. To obtain a link to the Google Map with all flooding comments from surveys, together with addresses, contact Janice T. Booher at [JJLBooher@comcast.net](mailto:JJLBooher@comcast.net). Comments regarding flooding are available by clicking the icons when the password is entered.



### Legend

**Black** - Households that did not report experience with flooding

**Blue** - Households that reported experience with flooding

**Icons with an X** – households that mention drainage in their comments

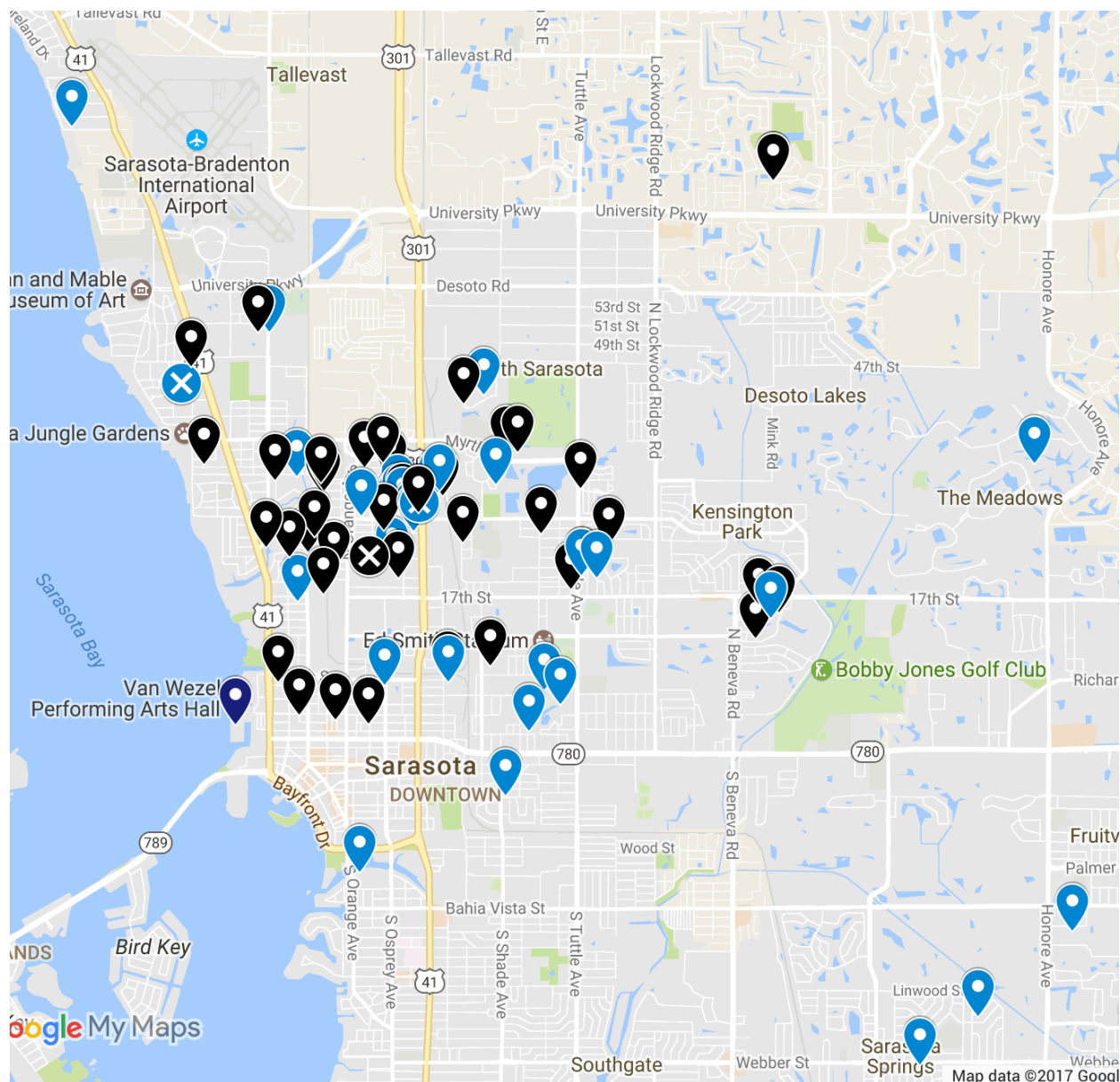
**Figure 9.** The geographic locations of all respondents are shown to the left. All respondents were located west of I-75. The northernmost respondent was in Bradenton, and the southernmost was in Laurel.

-This is a project of Unitarian Universalist Justice Florida, led in Sarasota by the UU Church of Sarasota in partnership with the Community Bible Church in Newtown.

-This project was funded in part by the Unitarian Universalist Fund for Social Responsibility.

-This project was funded in part by the UUFBR Endowment Fund.

-Development of the ReACT Tool Kit and the Pilot Project was funded by EPA Environmental Justice Grant #EQ-00D35415-0 awarded to the Green Sanctuary Committee of the UU Fellowship of Boca Raton.



**Figure 10.** This view of the Google Map shows the cluster of responses in the Newtown area.

#### Legend

**Black** - Households that did not report experience with flooding

**Blue** - Households that reported experience with flooding

**Icons with an X** – households that mention drainage in their comments

-This is a project of Unitarian Universalist Justice Florida, led in Sarasota by the UU Church of Sarasota in partnership with the Community Bible Church in Newtown.

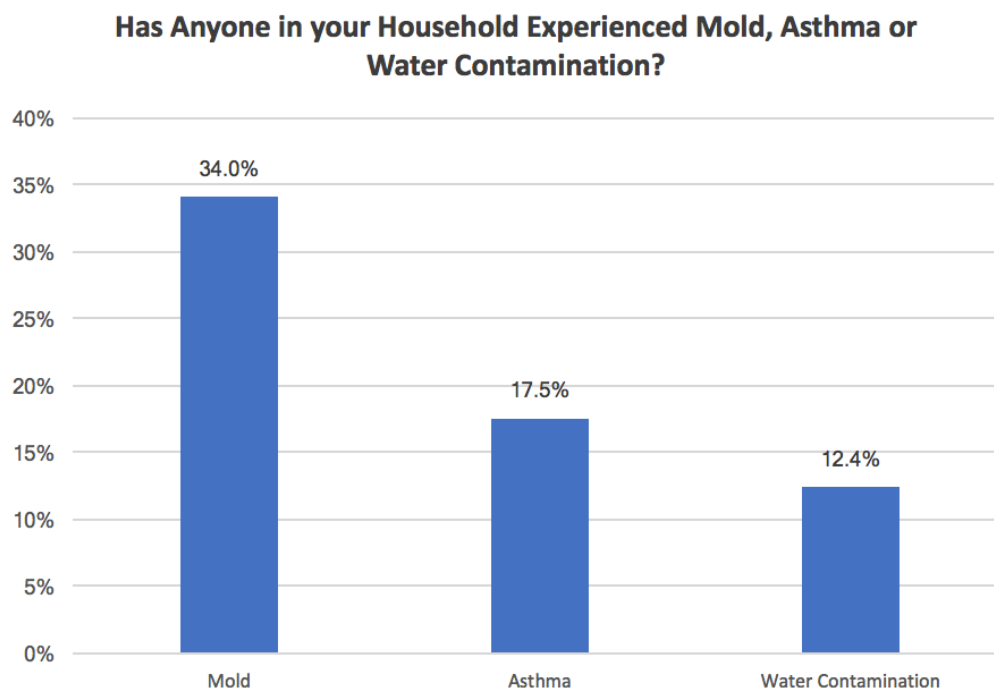
-This project was funded in part by the Unitarian Universalist Fund for Social Responsibility.

-This project was funded in part by the UUFBR Endowment Fund.

-Development of the ReACT Tool Kit and the Pilot Project was funded by EPA Environmental Justice Grant #EQ-00D35415-0 awarded to the Green Sanctuary Committee of the UU Fellowship of Boca Raton.

### Mold, Asthma and Water Contamination

Residents were asked, “Have you or anyone in your household experienced any of the following at your current address?” Respondents circled Yes or No in response to Mold, Asthma and Water Contamination.



**Figure 11.** Slightly more than a third (34%) of residents surveyed reported experiencing mold at their current address. Asthma was experienced by 18% of responding households, and 13% of households reported experience with water contamination.

Florida CHARTS reports the Sarasota County adult asthma prevalence in 2013 was 5.3%.<sup>5</sup> This means that the prevalence of asthma among residents responding to the survey (18%) is more than three times the 2013 county prevalence. It is therefore important that 34% of residents sampled also experienced mold, because mold is a common asthma trigger.<sup>6</sup>

<sup>5</sup> "FLHealthCHARTS BRFSS Indicators Dataview Page." Florida Department of Health, Division of Public Health Statistics & Performance Management., n.d. Web. 30 Mar. 2017

<sup>6</sup> "Common Asthma Triggers." *Centers for Disease Control and Prevention*. Centers for Disease Control and Prevention, 20 Aug. 2012. Web. 16 Feb. 2017. <https://www.cdc.gov/asthma/triggers.html>

-This is a project of Unitarian Universalist Justice Florida, led in Sarasota by the UU Church of Sarasota in partnership with the Community Bible Church in Newtown.

-This project was funded in part by the Unitarian Universalist Fund for Social Responsibility.

-This project was funded in part by the UUFBR Endowment Fund.

-Development of the ReACT Tool Kit and the Pilot Project was funded by EPA Environmental Justice Grant #EQ-00D35415-0 awarded to the Green Sanctuary Committee of the UU Fellowship of Boca Raton.

## **Contributors to Project Success**

### **Unitarian Universalist Church of Sarasota**

Climate Leader	Diane Cirksena
Graphic Design	Ann Urick
President	Ward Pallotta

### **Community Bible Church**

Clerical Leadership	Pastor Jo Thomas
Outreach Team	Phillip Felder
	Vivianna Martin
	Barbara Sallee
	Peg Tams

### **Government Officials**

Sarasota Sustainability Manager  
Stevie Freeman-Montes, PMP

Sarasota County Stormwater Engineer  
Ben Quartermine, P.E.

### **Community Support**

Newtown Women's Group	Helen James
Former Sarasota Mayor	Richard Martin

-This is a project of Unitarian Universalist Justice Florida, led in Sarasota by the UU Church of Sarasota in partnership with the Community Bible Church in Newtown.

-This project was funded in part by the Unitarian Universalist Fund for Social Responsibility.

-This project was funded in part by the UUFBR Endowment Fund.

-Development of the ReACT Tool Kit and the Pilot Project was funded by EPA Environmental Justice Grant #EQ-00D35415-0 awarded to the Green Sanctuary Committee of the UU Fellowship of Boca Raton.

## **Appendix A**

### Health and Climate Outreach Sheet (English)

- This is a project of Unitarian Universalist Justice Florida, led in Sarasota by the UU Church of Sarasota in partnership with the Community Bible Church in Newtown.
- This project was funded in part by the Unitarian Universalist Fund for Social Responsibility.
- This project was funded in part by the UUFBR Endowment Fund.
- Development of the ReACT Tool Kit and the Pilot Project was funded by EPA Environmental Justice Grant #EQ-00D35415-0 awarded to the Green Sanctuary Committee of the UU Fellowship of Boca Raton.



# RISING TOGETHER:

TEMPERATURE, WATER, HEALTH & STRENGTH



CodeRED is a weather warning system that delivers alerts by voice calls, text messages and emails to subscribers who are in the path of a severe storm.

Sign up online for automatic alerts: <https://public.codedredweb.com/cne/en-US/BFB7CC4C6C0A>

Or download mobile app for automatic alerts: <https://ecnetwork.com/codedred-mobile-alert-app/>

## CITY OF SARASOTA CONTACTS

Sarasota Police / Fire Emergency 911  
Sarasota Police / Fire (non-emergency) (941) 316-1199

## SARASOTA COUNTY CONTACTS

Sarasota County Call Center (941) 861-5000  
(Evacuation information) [www.scgov.net](http://www.scgov.net)  
TOD-Deaf Communications (941) 861-1833

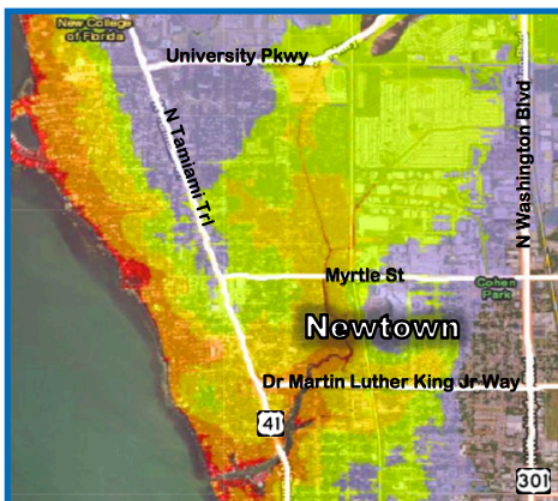
## STATE OF FLORIDA CONTACTS

FL Emergency Information Line (800) 342-3557  
FL Dept of Emergency Management (850) 413-9969  
Hearing Impaired (800) 226-4329  
FL Dept of Public Health (water testing) (850) 245-4240  
FL Environment Protection (algae blooms)

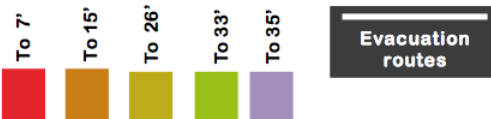
## RADIO STATIONS

NOAA Weather Radio		162.4 MHz
AM Radio Stations	WLSS 930	WRSQ 1220
	WTMY 1320	WBRD 1420
	WWPR 1490	WENG 1530
FM Radio Stations	WJIS 88.1	WSMR 89.1
	WLTQ 92.1	WHPT 102.5
	WKZM 104.3	WTZB 105.9
	WCTQ 106.5	WSRQ 106.9
	WSRZ 107.9	

## EVACUATIONS



## STORM SURGES



## SHELTERS

	ADDRESS	ELEVATION	DOG/CAT SHELTER
Booker Middle School	2250 Myrtle St	30'	No
Tuttle Elementary school	2863 8th St	34'	No
Bishop Nevins Academy	4380 Fruitville Rd	26'	No
Sarasota High School	1000 S School Ave	11'-23'	No
Brookside Middle School	3636 S Shade Ave	27'	Yes
Southside Elementary School	1901 Webber St	22'	No
Brentwood Elementary School	2600 Vinson Ave	26'	No
Riverview High School	1 Ram Way	18'	Yes
Phillippi Shores Elementary	4747 S Tamiami Tr	32'	No
Ashton Elementary School	5110 Ashton Rd	30'	No
Gulf Gate Elementary	6500 S Lockwood Ridge	21'	No

DO NOT CALL 911 FOR HURRICANE INFORMATION

**HURRICANE WIND SCALE**  
Category 1 74-96 mph winds

Category 2 96-110 mph winds  
Category 3 111-129 mph winds

Category 4 130-156 mph winds  
Category 5 157 & over mph winds

This project is funded in part by the Unitarian Universalist Fund for Social Responsibility.  
This project is funded in part by the Unitarian Universalist Fellowship of Boca Raton Endowment Fund.  
Development of the ReACT Tool Kit was funded by EPA Grant EQ-00D35415-0 to the Green Sanctuary Committee of UUFBR.

Developed by Dr. Ana Puszkun-Chevlín  
Modified by UU Church of Sarasota

This is a project of Unitarian Universalist Justice Florida, led in Sarasota by the UU Church of Sarasota in partnership with the Community Bible Church in Newtown.

-This project was funded in part by the Unitarian Universalist Fund for Social Responsibility.

-This project was funded in part by the UUFBR Endowment Fund.

-Development of the ReACT Tool Kit and the Pilot Project was funded by EPA Environmental Justice Grant #EQ-00D35415-0 awarded to the Green Sanctuary Committee of the UU Fellowship of Boca Raton.

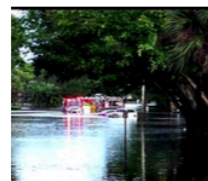
### WATCH FOR HEAT INDEX AND AIR QUALITY ALERTS

- Find information about the heat index at [www.nws.noaa.gov/om/heat/heat-illness.shtml](http://www.nws.noaa.gov/om/heat/heat-illness.shtml)
- Get air quality reports from [www.airnow.gov](http://www.airnow.gov) or call (561) 837-5092 to hear report.
- Use extreme caution for a heat Index over 103°! Vulnerable populations are at risk with a heat index of 91° or over.
- Remain indoors in air-conditioned places during heat waves and poor air quality days.
- If outdoors, avoid strenuous activity and stay hydrated.
- If you shelter in place, stock 1 gallon of clean water per person, per day at least 3 days, plus food

Air Quality Index (AQI) Values When the AQI is in this range:	Levels of Health Concern ...air quality conditions are:
0-50	Good
51-100	Moderate
101-150	Unhealthy to Sensitive Groups
151 to 200	Unhealthy
201 to 300	Very Unhealthy
301 to 500	Hazardous

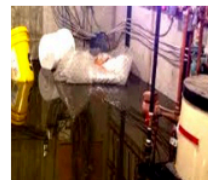
### BE SAFE DURING STORMS AND FLOODING

- Keep storm drains, canals and gutters clear of debris to prevent flood and water damage.
- Stay informed. Create a plan with your family and have an emergency kit prepared before an emergency.
- Communicate with family, friends and neighbors about your emergency plan.
- If you shelter in place, stock 1 gall of water per person per day for 4-5 days, plus food.
- STAY OUT OF FLOODWATERS.** 6" of moving water can sweep you off your feet. Water depth is difficult to gauge and hazards could be submerged.



### ASSUME STANDING FLOOD WATER IS CONTAMINATED

- Floodwaters are often contaminated with fuel, chemicals, sewage and bacteria.
- Avoid ALL contact with floodwaters and avoid inhaling evaporating fumes.
- Clean all hard surfaces with a solution of 1.5 cups bleach per 1 gallon of water.
- Wear a mask and rubber boots and gloves during cleanup.
- Do not expose open wounds to flood waters.



### HEED BOIL WATER ALERT GUIDELINES

- Don't use tap water to drink, make ice, prepare food or brush teeth. Use the clean water from your disaster kit, boiled water or bottled water.
- Don't use tap water to wash dishes, glasses or cutlery. Use boiled water.
- Don't use tap water to wash hands or bathe and avoid exposure to open wounds.
- Bring water to a rolling boil for a minimum of 1 minute. Or disinfect with 1/8 teaspoon of unscented bleach per gallon. Mix and let stand for 60 minutes before using. Bleach does not remove chemical pollutants.
- When boil alert is lifted, run water from all faucets for 5 minutes and change filters including the frig and icemaker.



### MINIMIZE MOLD GROWTH

- Molds are allergens and can be toxic.
- Active mold is black, green or pink. Inactive mold is powdery and often white, but will reactivate with moisture.
- To prevent mold, dry things as quickly as possible.
- Throw out non-cleanable items that have been wet for over 48 hours. Freezing deactivates mold.
- Homeowners can clean moldy areas that are less than 10 sq ft with a solution of a cup bleach per 1 gallon of water. Wear gloves and a mask. Use professionals to address large mold areas and to clean HVAC systems.



### LIMIT EXPOSURE TO MOSQUITOS AND ALGAE

- Eliminate mosquito breeding areas. Drain outdoor areas that collect water including flowerpots, birdbaths, buckets, drums, child pools, etc.
- Use insect repellent with DEET or oil of lemon eucalyptus. Limit DEET exposure in young children by washing it off before bed.
- Report algae blooms to Florida DEP, Bureau of Labs (850) 245-8159 and stay away from them. Algae can be toxic and must be tested.



This is a project of Unitarian Universalist Ministries, Inc. created by the UU Church of Sarasota in partnership with the Community Bible Church in Newtown.

-This project was funded in part by the Unitarian Universalist Fund for Social Responsibility.

-This project was funded in part by the UUFBR Endowment Fund.

-Development of the ReACT Tool Kit and the Pilot Project was funded by EPA Environmental Justice Grant #EQ-00D35415-0 awarded to the Green Sanctuary Committee of the UU Fellowship of Boca Raton.

## **Appendix B**

### Sea Level Rise Risk Perception Survey (English)

-This is a project of Unitarian Universalist Justice Florida, led in Sarasota by the UU Church of Sarasota in partnership with the Community Bible Church in Newtown.

-This project was funded in part by the Unitarian Universalist Fund for Social Responsibility.

-This project was funded in part by the UUFBR Endowment Fund.

-Development of the ReACT Tool Kit and the Pilot Project was funded by EPA Environmental Justice Grant #EQ-00D35415-0 awarded to the Green Sanctuary Committee of the UU Fellowship of Boca Raton.

---

# Sea Level Rise Risk Perception in Sarasota County

---

Investigators: Diane Cirksena and Jan Booher  
This is a project of UU Justice Florida.

Thank you for your interest in taking this brief survey. It may take about 5 minutes to answer the questions below. Your participation in this survey is completely voluntary and your responses will remain confidential. The purpose of the survey is to measure perceived risk to sea level rise in Newtown, FL, and to document residents' concerns and experiences related to extreme weather, flooding, mold, and asthma.

By completing the survey, you give consent to participate in this study.

If you have questions about the study, please contact: Diane Cirksena [dian.ec@hotmail.com](mailto:dian.ec@hotmail.com) or Jan Booher [JJLBooher@comcast.net](mailto:JJLBooher@comcast.net)

This Survey was developed by Dr. Keren Bolter - FAU Center for Environmental Studies [kbolter@fau.edu](mailto:kbolter@fau.edu), and modified for Sarasota by The Unitarian Universalist Church of Sarasota.

This project is funded in part by the Unitarian Universalist Fund for Social Responsibility.

This project is funded in part by The Unitarian Universalist Fellowship of Boca Raton Endowment Fund.

\* Required

-This is a project of Unitarian Universalist Justice Florida, led in Sarasota by the UU Church of Sarasota in partnership with the Community Bible Church in Newtown.

-This project was funded in part by the Unitarian Universalist Fund for Social Responsibility.

-This project was funded in part by the UUFBR Endowment Fund.

-Development of the ReACT Tool Kit and the Pilot Project was funded by EPA Environmental Justice Grant #EQ-00D35415-0 awarded to the Green Sanctuary Committee of the UU Fellowship of Boca Raton.

## Section A - Background Information

---

*1) What is your zip-code \**

---

*2) What city do you live in? \**

---

*3) What is the first line of your address?*

(ex. 235 NW 5 St)

---

*4) How would you rate your existing knowledge about sea level rise?*

- ☐ Not at all familiar
- ☐ Somewhat familiar
- ☐ Very familiar
- ☐ Extremely familiar

-This is a project of Unitarian Universalist Justice Florida, led in Sarasota by the UU Church of Sarasota in partnership with the Community Bible Church in Newtown.

-This project was funded in part by the Unitarian Universalist Fund for Social Responsibility.

-This project was funded in part by the UUFBR Endowment Fund.

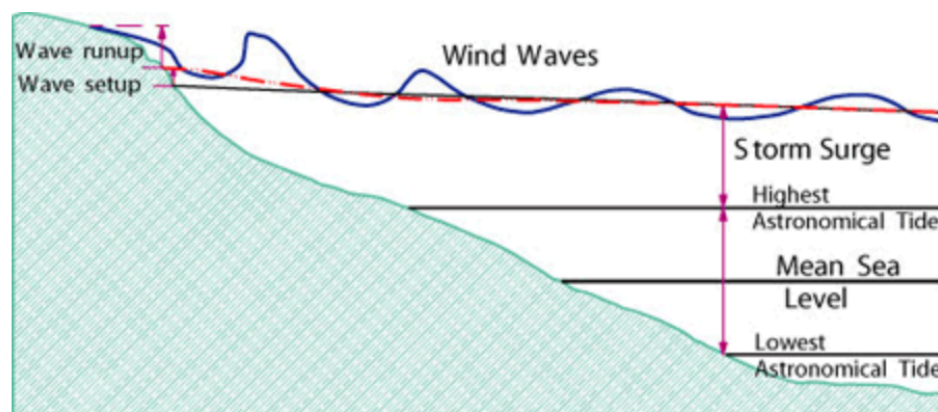
-Development of the ReACT Tool Kit and the Pilot Project was funded by EPA Environmental Justice Grant #EQ-00D35415-0 awarded to the Green Sanctuary Committee of the UU Fellowship of Boca Raton.



## Section B - Land Elevation, Water Levels, and Storms

Sea level rise is an increase in height of the sea's surface relative to land.

Mean Sea Level (MSL) is the average surface height of the ocean, about halfway between low and high tide. Land elevation is measured as a height above MSL.



*1) How many feet do you estimate your home to be above mean sea level? \**

(If you don't know, please guess a number that seems reasonable to you.)

*2) Do you think that sea level rise is occurring in Sarasota County today? \**

- ☐ Yes
- ☐ No

*3) Where you live, how many feet deep into the ground do you think that you would have to dig before you got to water (either freshwater or saltwater)?*

-This is a project of Unitarian Universalist Justice Florida, led in Sarasota by the UU Church of Sarasota in partnership with the Community Bible Church in Newtown.

-This project was funded in part by the Unitarian Universalist Fund for Social Responsibility.

-This project was funded in part by the UUFBR Endowment Fund.

-Development of the ReACT Tool Kit and the Pilot Project was funded by EPA Environmental Justice Grant #EQ-00D35415-0 awarded to the Green Sanctuary Committee of the UU Fellowship of Boca Raton.

## Section C - Focusing on Risks Associated with Sea Level Rise and Extreme Weather

*1) What is your overall level of concern with the future impacts of sea level rise for Sarasota County?*

1 = none / 2 = low / 3 = medium / 4 = high / 5 = very high

1 2 3 4 5

none ○ ○ ○ ○ ○ very high

*2) What is your overall level of extreme weather for Sarasota County?*

1 = none / 2 = low / 3 = medium / 4 = high / 5 = very high

1 2 3 4 5

none ○ ○ ○ ○ ○ very high

*3) Please choose your strongest concern for Sarasota County:*

☐ Water Quality

☐ Erosion

☐ Insurance

☐ Property Value

☐ Extreme Weather

☐ Other:

*4) Please briefly explain your chosen concern:*

(optional)

-This is a project of Unitarian Universalist Justice Florida, led in Sarasota by the UU Church of Sarasota in partnership with the Community Bible Church in Newtown.

-This project was funded in part by the Unitarian Universalist Fund for Social Responsibility.

-This project was funded in part by the UUFBR Endowment Fund.

-Development of the ReACT Tool Kit and the Pilot Project was funded by EPA Environmental Justice Grant #EQ-00D35415-0 awarded to the Green Sanctuary Committee of the UU Fellowship of Boca Raton.

---

**5) What flood-related impacts have you experienced in your neighborhood? \***

These may include high tide flooding, flooding with rain, or saltwater in retention ponds. (optional)

---

**6) Have you or anyone in your household experienced any of the following at your current address?\***

Check those items that have been experienced in your household.

- ☐ Mold
- ☐ Asthma
- ☐ Water Contamination

**Submit**

Never submit passwords through Google Forms.

Powered by



This content is neither created nor endorsed by Google.

[Report Abuse](#) - [Terms of Service](#) - [Additional Terms](#)

-This is a project of Unitarian Universalist Justice Florida, led in Sarasota by the UU Church of Sarasota in partnership with the Community Bible Church in Newtown.

-This project was funded in part by the Unitarian Universalist Fund for Social Responsibility.

-This project was funded in part by the UUFBR Endowment Fund.

-Development of the ReACT Tool Kit and the Pilot Project was funded by EPA Environmental Justice Grant #EQ-00D35415-0 awarded to the Green Sanctuary Committee of the UU Fellowship of Boca Raton.