

East Winwood-Altamonte Springs Community Report

Mission Critical Functions Survey



Central Florida Florida Disaster Resilience Initiative

Phase 1 Stage 2

2019



These materials were developed by Health Initiatives Foundation, Inc. in 2019. Surveys were conducted under the auspices of Health Initiatives Foundation, Inc.'s Florida Disaster Resilience Initiative, with funding from The Miami Foundation.

Surveying Completed

Thirty Mission Critical Function Surveys and 29 Housing and Emergency Services Surveys were collected in Altamonte Springs. They were collected in the Census Block Groups as indicated below.¹

Table 1. Number of Respondents to Surveys by Census Block Group

Census Block Group	Mission Critical Functions Survey	Housing & Emergency Services Surveys
121170219011	1	0
121170219021	17	20
121170220011	1	1
121170220012	7	9
121170216142	2	0
121170217051	1	0
TOTAL	29	29

¹ US Statistical Atlas <<https://statisticalatlas.com/place/Florida/Holden-Heights/Overview>>



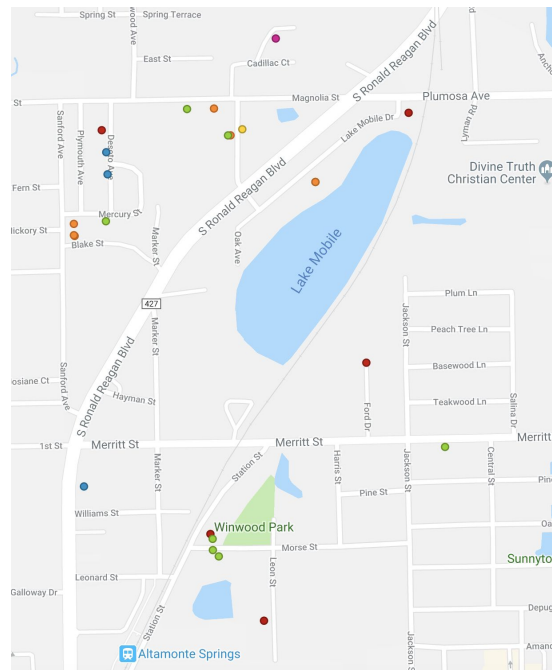
Mission Critical Functions Surveys:

Mission Critical Function Surveys are designed to determine if the community is tending toward resilience or vulnerability. Respondents rated 26 societal functions on the following scale:

- **Most Vulnerable**
- **Extremely Vulnerable**
- **Elevated Vulnerability**
- **Not Affected**
- **Resilient**
- **Highly Resilient**
- **Resilient and Sustainable**

Map 1. Vulnerability Scores of Respondents in Altamonte Springs

Note that the average Household Vulnerability Score, indicated by point color, across the 26 domains was between 2 and 6 for Altamonte Springs residents surveyed.



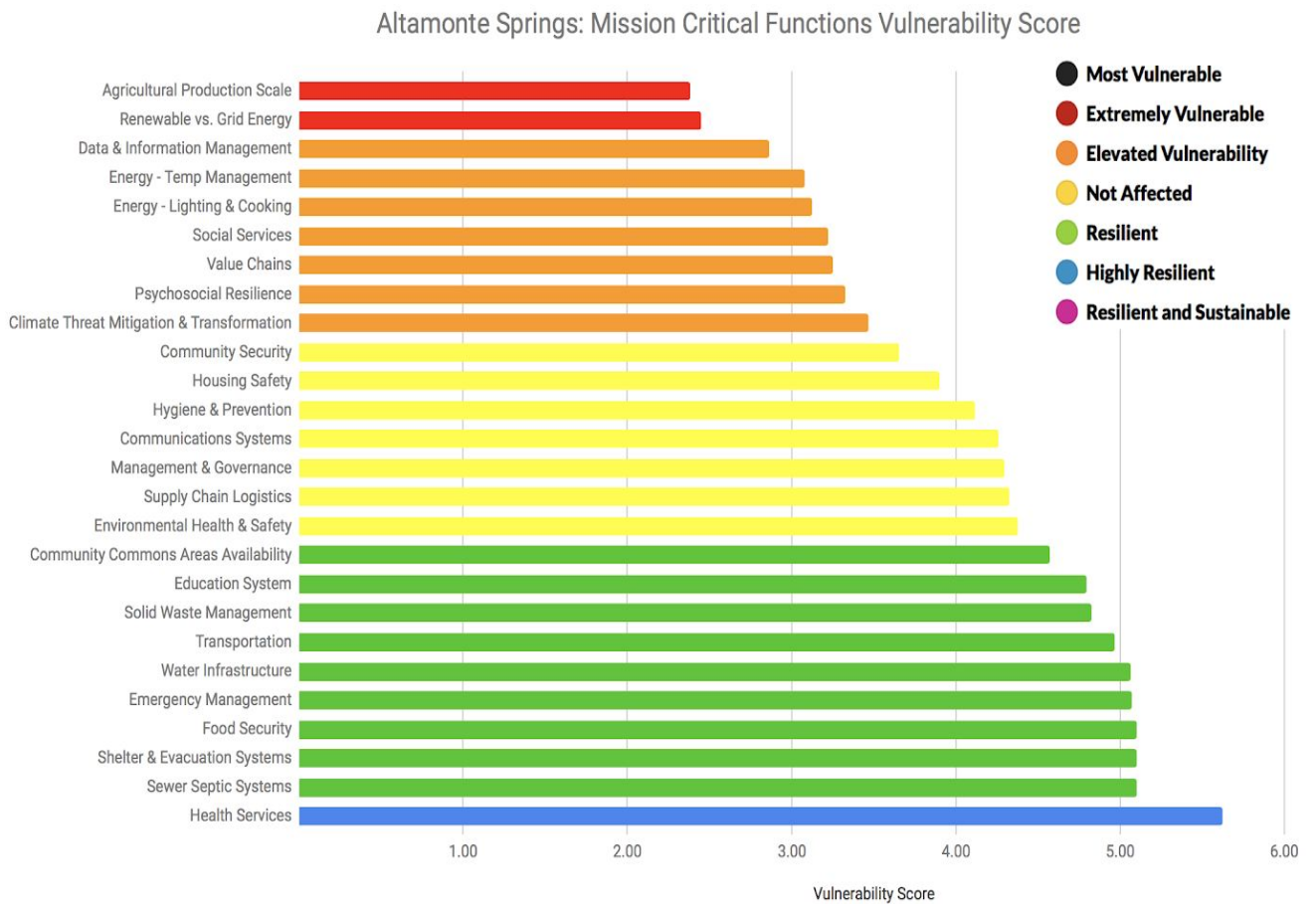
The categories with the lowest average scores are considered to be the most vulnerable functions (Graph 2). Agricultural Production Scale and Renewable vs. Grid Energy were scored as “Extremely Vulnerable.” Seven functions were rated “Elevated Vulnerability.” These included: Data & Information Management, Energy-Temperature Management, Energy-Lighting & Cooking, Social Services, Value Chains, Psychosocial Resilience



These materials were developed by Health Initiatives Foundation, Inc. in 2019. Surveys were conducted under the auspices of Health Initiatives Foundation, Inc.’s Florida Disaster Resilience Initiative, with funding from The Miami Foundation.

and Climate Threat Mitigation and Transformation. The function ranked the highest, and receiving the “Highly Resilient” ranking, was Health Services.

Graph 1. Average Mission Critical Function Ratings for Each Function



These materials were developed by Health Initiatives Foundation, Inc. in 2019. Surveys were conducted under the auspices of Health Initiatives Foundation, Inc.’s Florida Disaster Resilience Initiative, with funding from The Miami Foundation.