

# **Mercy Drive, Orlando Community Report Hazards and Risks**

## **Central Florida Florida Disaster Resilience Initiative Phase 1 Stage 2 2019**



These materials were developed by Health Initiatives Foundation, Inc. in 2019. Surveys were conducted under the auspices of Health Initiatives Foundation, Inc.'s Florida Disaster Resilience Initiative.

The Orange County Local Mitigation strategy includes a section on Hazardous Materials. The following excerpts explain the probability, vulnerability and Low Risk (29%) Rating for Extremely Hazardous Materials Incidents:

Facilities that store chemicals are scattered about the County and those with EHS chemicals are concentrated in the industrial areas. These areas are not as populated, but other facilities are located in more commercial and/or residential areas that may increase the chance of exposure.

Probability: There are over 200 fixed facilities that house extremely hazardous substances in Orange County. The probability of an incident occurring is high as there will continue to be hazardous materials present through the continued use of chemicals at fixed facilities and their transport to, from, through, and within Orange County and its jurisdictions. With Orange County being part of a large metropolitan area and centrally located in the State, it is a primary highway and freight passage in the region for goods that are being transported north and south on the Florida peninsula to Jacksonville or Miami, as well as east or west between Daytona Beach/Port Canaveral and Tampa. The likelihood for transportation incidents is amplified due to the number of possible encounters that can occur in a multi-modal setting. The most likely incident that may occur would involve a petroleum product spilling onto a roadway or other impermeable surface that would then require some kind of clean-up.

Other releases at fixed facilities will also continue to happen. While the number of instances will be likely be lower than the transportation incidents, the chemicals involved, such as EHS chemicals like chlorine, ammonia, sulfur dioxide, will be greater in their severity than petroleum products. The degree to which these releases or spills impact the county, either in quantity, severity, or location is an unknown variable. Continued emergency planning, accuracy for inventory reporting, and preparedness training must continue to occur to help reduce the number of occurrences.<sup>1</sup>

Risk: **Low – 29%**

Even with a high probability of incidents, minor to moderate anticipated or potential impacts, and a moderate vulnerability, the risk of hazardous materials is low. This is a result of the significant amount of mitigation measures that take place in the county to prepare for a release in advance. Training happens on a regular basis throughout the year and an exercise with a HazMat-based scenario is conducted by the Local Emergency Planning Committee (LEPC) on, at least, a bi-annual basis, if not more frequently. The specialized equipment and HazMat teams provide a consistently high level of support for responding the incidents.<sup>2</sup>

---

<sup>1</sup> Orange County Local Mitigation Strategy 2016, p. 83

<<https://orlando.novusagenda.com/AgendaPublic/AttachmentViewer.ashx?AttachmentID=70336&ItemID=41681>>

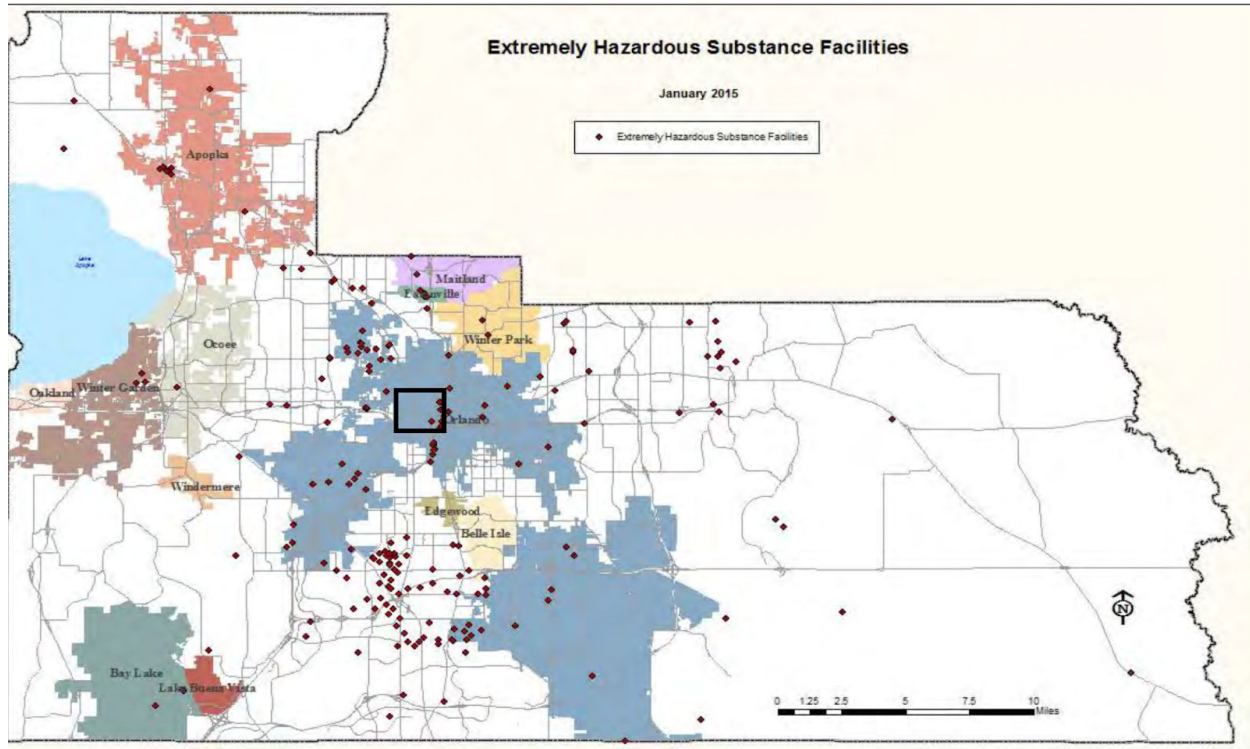
<sup>2</sup> Orange County Local Mitigation Strategy 2016, p. 86

<<https://orlando.novusagenda.com/AgendaPublic/AttachmentViewer.ashx?AttachmentID=70336&ItemID=41681>>



# Map 1. Orange County Local Mitigation Strategy 2016 Map of Extremely Hazardous Facilities in Orange County, FL. <sup>3</sup>

Black rectangle surrounds the Mercy Drive Area



Source: E-Plan – Emergency Response Information System, 2013 Chemical Inventories

<sup>3</sup> Orange County Local Mitigation Strategy 2016, p. 91  
<<https://orlando.novusagenda.com/AgendaPublic/AttachmentViewer.ashx?AttachmentID=70336&ItemID=41681>>



## Environmental Health Concerns

Mercy Drive and surrounding Census Block Groups: 120950120001, 120950124031, 120950187002, and 120950187003 are all at or above the 91st percentile in the country for proximity to a Superfund site. All Census Block Groups have air quality indicators in the 70th to 80th percentile in the US. These Air Quality Indicators: NATA Diesel Particulate Matter, NATA Air Toxics Cancer Risk, and NATA Respiratory Hazard Index are described on the EPA [Environmental Indicators](#) webpage.<sup>4</sup> In addition, there are some homes constructed prior to the 1960's, which would appear in the table below as the lead paint indicator.<sup>5</sup> The Census Block Groups surveyed were in the 10th to 52nd percentile in the country for lead paint indicator.

**Table 1. Percentile in the US for Environmental Indicators**

Indicator	Census Block Group				
	120950120001	120950124031	120950149081	120950187002	120950187003
<b>NATA Diesel Particulate Matter (ug/m3)</b>	<b>70-80th</b> Percentile in US	<b>70-80th</b> Percentile in US	<b>80-90th</b> Percentile in US	<b>70-80th</b> Percentile in US	<b>70-80th</b> Percentile in US
<b>NATA Air Toxics Cancer Risk (risk per MM)</b>	<b>70-80th</b> Percentile in US	<b>70-80th</b> Percentile in US	<b>60-70th</b> Percentile in US	<b>70-80th</b> Percentile in US	<b>70-80th</b> Percentile in US
<b>NATA Respiratory Hazard Index</b>	<b>70-80th</b> Percentile in US	<b>70-80th</b> Percentile in US	<b>70-80th</b> Percentile in US	<b>70-80th</b> Percentile in US	<b>70-80th</b> Percentile in US
<b>Traffic Proximity and Volume (daily traffic count/distance to road)</b>	<b>42nd</b> Percentile in US	<b>58th</b> Percentile in US	<b>30th</b> Percentile in US	<b>71st</b> Percentile in US	<b>48th</b> Percentile in US
<b>Lead Paint Indicator (% pre-1960s housing)</b>	<b>42nd</b> Percentile in US	<b>30th</b> Percentile in US	<b>10th</b> Percentile in US	<b>46th</b> Percentile in US	<b>52nd</b> Percentile in US
<b>Superfund Proximity (site count/km distance)</b>	<b>91st</b> Percentile in US	<b>92nd</b> Percentile in US	<b>79th</b> Percentile in US	<b>93rd</b> Percentile in US	<b>92nd</b> Percentile in US

<sup>4</sup> EPA EJSCREEN Environmental Indicators

<<https://www.epa.gov/ejscreen/overview-environmental-indicators-ejscreen>>

<sup>5</sup> EPA EJSCREEN: Environmental Justice Screening and Mapping Tool <<https://www.epa.gov/ejscreen>>



<b>Proximity to facilities w Required Risk Management Plans (facility count/km distance)</b>	<b>89th</b> Percentile in US	<b>92nd</b> Percentile in US	<b>78th</b> Percentile in US	<b>81st</b> Percentile in US	<b>82nd</b> Percentile in US
--	---------------------------------	---------------------------------	---------------------------------	---------------------------------	---------------------------------

\*The National-Scale Air Toxics Assessment (NATA) is EPA's ongoing, comprehensive evaluation of air toxics in the United States. EPA developed the NATA to prioritize air toxics, emission sources, and locations of interest for further study. It is important to remember that NATA provides broad estimates of health risks over geographic areas of the country, not definitive risks to specific individuals or locations. More information on the NATA analysis can be found at: <https://www.epa.gov/national-air-toxics-assessment>.

### Superfund Site

The Active Superfund Site that impacts the Superfund Proximity Indicator in Table 4 is the **Chevron Chemical Co - Ortho Division** at 3100 N Orange Blossom Trl - Hwy 441 Orlando, FL 32955 (Facility Id: ERIC\_3882). The public record about this site is available in these [Documents](#), and on the EPA Superfund Site.<sup>6</sup>

### Brownfield Area

#### **Table 2. Brownfield Area and Site in the Vicinity of Mercy Drive<sup>7</sup>**

Property located at 501 and 571 Mercy Drive, 3569 Old Winter Garden Rd, and 518 & 516 N Ferguson Rd, which is <3 miles East of the Easternmost edge of the Mercy Drive Neighborhood.

<b>Area ID</b>	<b>Area Name</b>	<b>Site ID</b>	<b>Site Name</b>
<a href="#">BF480601000</a>	Hughes Supply Mega Center Brownfield Area		

<sup>6</sup> EPA Superfund Site: Chevron Chemical Company (Ortho Division) site  
<<https://cumulis.epa.gov/supercpad/CurSites/csinfo.cfm?id=0400520&msspp=med>>

<sup>7</sup> Florida Department of Environmental Protection Brownfield Area and Site Documentation  
<<https://floridadep.gov/waste/waste-cleanup/content/florida-brownfields-area-and-site-documentation>>



## Contaminated Sites

The current Florida Department of Environmental Protection Contamination Locator Map<sup>8</sup> for Mercy Drive and the surrounding neighborhoods shows 1 Superfund Site, at least 19 Active Petroleum Cleanup sites, 8 Pending Petroleum Cleanup Sites, and 6 Active Other Waste Cleanup Sites. The “Other Waste Cleanup Site” category includes:

Drycleaning: Sites contaminated with drycleaning solvents that are eligible to be cleaned up by the DEP

Responsible Party: Sites that will be cleaned up by the party responsible for the contamination or by a party that did not cause the contamination but has accepted responsibility for cleanup

State Funded: Sites that will be cleaned up by the DEP because there is no party identified that is responsible for the contamination or able to clean it up

State-Owned Lands Cleanup: Sites on state properties (such as state parks or state-owned buildings) that will be cleaned up by the DEP

Hazardous Waste: Sites at regulated hazardous waste facilities that will be cleaned up by the facility owner or operator in accordance with the federal hazardous waste program.

These are the Active and Pending Cleanup Sites that are listed on the Florida Department of Environmental Protection’s Contamination Locator Map on May14, 2019 in the approximate geography of the Census Blocks Surveyed, with most of the contaminated sites on the periphery of the geography.<sup>9</sup> Documentation of site status can be accessed by clicking through the active links.

### **Active Petroleum Cleanup Site**

- **7-ELEVEN FOOD STORE #27502** at 4255 W COLONIAL DR, ORLANDO, FL 32808; Facility Id: 8512941 [Watch This Site](#) [Documents](#)
- **AAMCO** at 5527 W COLONIAL DR., ORLANDO, FL 32808; Facility Id: 9803041 [Watch This Site](#) [Documents](#)
- **ALLIED TIRE STORE #13** at 6224 SILVER STAR RD, ORLANDO, FL 32808; Facility Id: 8513071 [Watch This Site](#) [Documents](#)

---

<sup>8</sup> Florida Department of Environmental Protection Contamination Locator Map <<http://prodenv.dep.state.fl.us/DepClnup/welcome.do>>

<sup>9</sup> Florida Department of Environmental Protection Contamination Locator Map <<http://prodenv.dep.state.fl.us/DepClnup/welcome.do>>



- **AMERICAN SERVICE CONTROL-MARKETING CTR** at 2825 MERCY DR, ORLANDO, FL 32808; Facility Id: 8944878     [Watch This Site](#)     [Documents](#)
- **AMOCO #6182-PINE HILLS** at 5001 W COLONIAL DR, ORLANDO, FL 32808; Facility Id: 8513274     [Watch This Site](#)     [Documents](#)
- **BP #00385302** at 5047 W COLONIAL DR, ORLANDO, FL 32808; Facility Id: 8512983     [Watch This Site](#)     [Documents](#)
- **CHEVRON #107 SILVER STAR** at 5419 SILVER STAR RD, ORLANDO, FL 32808; Facility Id: 8513483     [Watch This Site](#)     [Documents](#)
- **CHEVRON - WEST COLONIAL** at 4708 W COLONIAL DR, ORLANDO, FL 32808; Facility Id: 8521426     [Watch This Site](#)     [Documents](#)
- **GATOR FREIGHTWAYS INC** at 2506 EUNICE AVE, ORLANDO, FL 32808; Facility Id: 8512733     [Watch This Site](#)     [Documents](#)
- **DICK BENNETT MOTORS INC** at 4200 W COLONIAL AVE, ORLANDO, FL 32808; Facility Id: 9101979     [Watch This Site](#)     [Documents](#)
- **LP COMMERCIAL FUELS** at 2920 SILVER STAR RD, ORLANDO, FL 32808; Facility Id: 9103586     [Watch This Site](#)     [Documents](#)
- **LUCERNE CITGO INC** at 817 MAIN LANE, ORLANDO, FL 32806; Facility Id: 8512659     [Watch This Site](#)     [Documents](#)
- **ORANGE BUICK-GMC TRUCK CO** at 3883 W COLONIAL DR, ORLANDO, FL 32808; Facility Id: 8627927     [Watch This Site](#)     [Documents](#)
- **ORLANDO AUTO SALES** at 3905 EL REY RD, ORLANDO, FL 32808; Facility Id: 9102062     [Watch This Site](#)     [Documents](#)
- **PANTRY #1261 DBA/LIL CHAMP #1261** at 2986 SILVER STAR RD, ORLANDO, FL 32808; Facility Id: 8944535     [Watch This Site](#)     [Documents](#)
- **PINE HILLS AUTO CENTER** at 4885 W COLONIAL DR, ORLANDO, FL 32808; Facility Id: 8625311     [Watch This Site](#)     [Documents](#)
- **SILVER STAR & FAIRVILLA FUEL CO** at 2986 SILVER STAR RD, ORLANDO, FL 32808; Facility Id: 8942571     [Watch This Site](#)     [Documents](#)
- **SILVER STAR FOOD MART** at 3965 SILVER STAR RD, ORLANDO, FL 32808; Facility Id: 8513123     [Watch This Site](#)     [Documents](#)
- **SUN STATE FORD INC** at 3535 W COLONIAL DR, ORLANDO, FL 32808; Facility Id: 8627713     [Watch This Site](#)     [Documents](#)

**Pending Petroleum Cleanup Site**

- **7-ELEVEN FOOD STORE #26329** at 2605 SILVER STAR RD, ORLANDO, FL 32810; Facility Id: 8521811     [Watch This Site](#)     [Documents](#)
- **AUTONATION CHEVROLET WEST COLONIAL** at 3707 W COLONIAL DR, ORLANDO, FL 32808; Facility Id: 8737252     [Watch This Site](#)     [Documents](#)



These materials were developed by Health Initiatives Foundation, Inc. in 2019. Surveys were conducted under the auspices of

Health Initiatives Foundation, Inc.'s Florida Disaster Resilience Initiati

- **EUNICE AVENUE OFFICE-WAREHOUSE** at 2701 EUNICE AVE, ORLANDO, FL 32808; Facility Id: 9101315 [Watch This Site](#) [Documents](#)
- **FRITO-LAY INC** at 2800 SILVER STAR RD, ORLANDO, FL 32808; Facility Id: 8521603 [Watch This Site](#) [Documents](#)
- **MOBIL #10523** at 2800 W COLONIAL DR, ORLANDO, FL 32808; Facility Id: 8512972 [Watch This Site](#) [Documents](#)
- **ORLANDO DODGE** at 4101 W COLONIAL DR, ORLANDO, FL 32808; Facility Id: 8629380 [Watch This Site](#) [Documents](#)
- **PRECISION COLLISION INC** at 4001 W SILVER STAR RD, ORLANDO, FL 32808; Facility Id: 9102306 [Watch This Site](#) [Documents](#)
- **TCS COMMUNICATIONS** at 3161 CLEMSON RD, ORLANDO, FL 32808; Facility Id: 9046099 [Watch This Site](#) [Documents](#)





### Active Other Cleanup Site

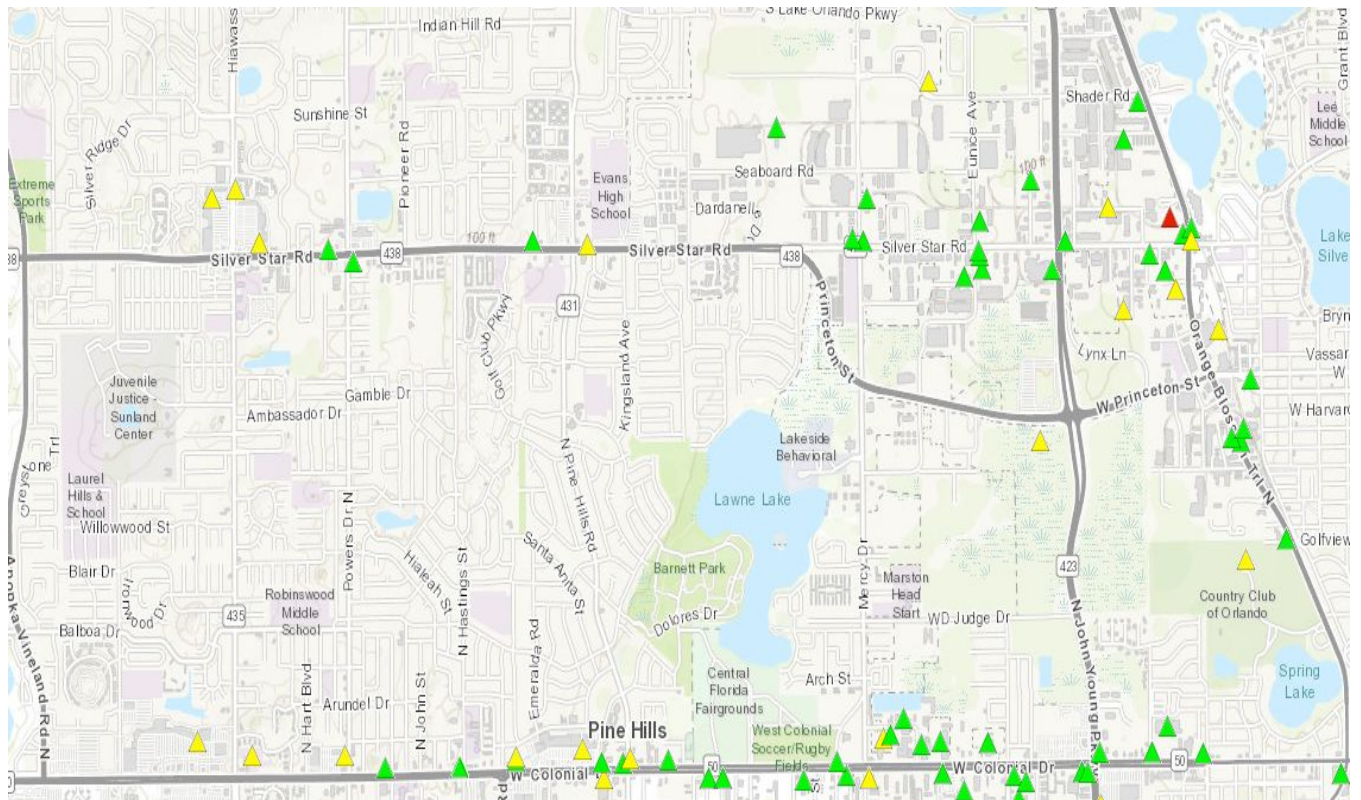
- **Weavers Cleaners** at 711 N Pine Hills Rd, Orlando, FL 32808; Facility Id: ERIC\_5008 [Watch This Site](#) [Documents](#)
- **Total Valet & Wardrobe Services** at 5036 W Colonial Dr, Orlando, FL 32808; Facility Id: ERIC\_5025 [Watch This Site](#) [Documents](#)
- **FORMER NORTRAX DEALERSHIP FLORIDA** at 4333 NORTH JOHN YOUNG PARKWAY, ORLANDO, FL ; Facility Id: COM\_373872 [Watch This Site](#) [Documents](#)
- **King of Cleaners Inc** at 5043 Silver Star Rd, Orlando, FL 32808; Facility Id: ERIC\_4984 [Watch This Site](#) [Documents](#)
- **Nickelsens Cleaners & Laundry** at 5157 W Colonial Dr, Orlando, FL 32808; Facility Id: ERIC\_4988 [Watch This Site](#) [Documents](#)
- **ORLANDO DODGE** at 4101 WEST COLONIAL DRIVE, ORLANDO, FL 32808; Facility Id: COM\_178639 [Watch This Site](#) [Documents](#)





## Map 2. Contamination Locator Map<sup>10</sup>

Cleanup types:  Brownfields  Petroleum  Superfund  Other Waste Cleanup



<sup>10</sup> Florida Department of Environmental Protection Contamination Locator Map  
<<http://prodenv.dep.state.fl.us/DepCInup/viewmap.do>>



These materials were developed by Health Initiatives Foundation, Inc. in 2019. Surveys were conducted under the auspices of Health Initiatives Foundation, Inc.'s Florida Disaster Resilience Initiati